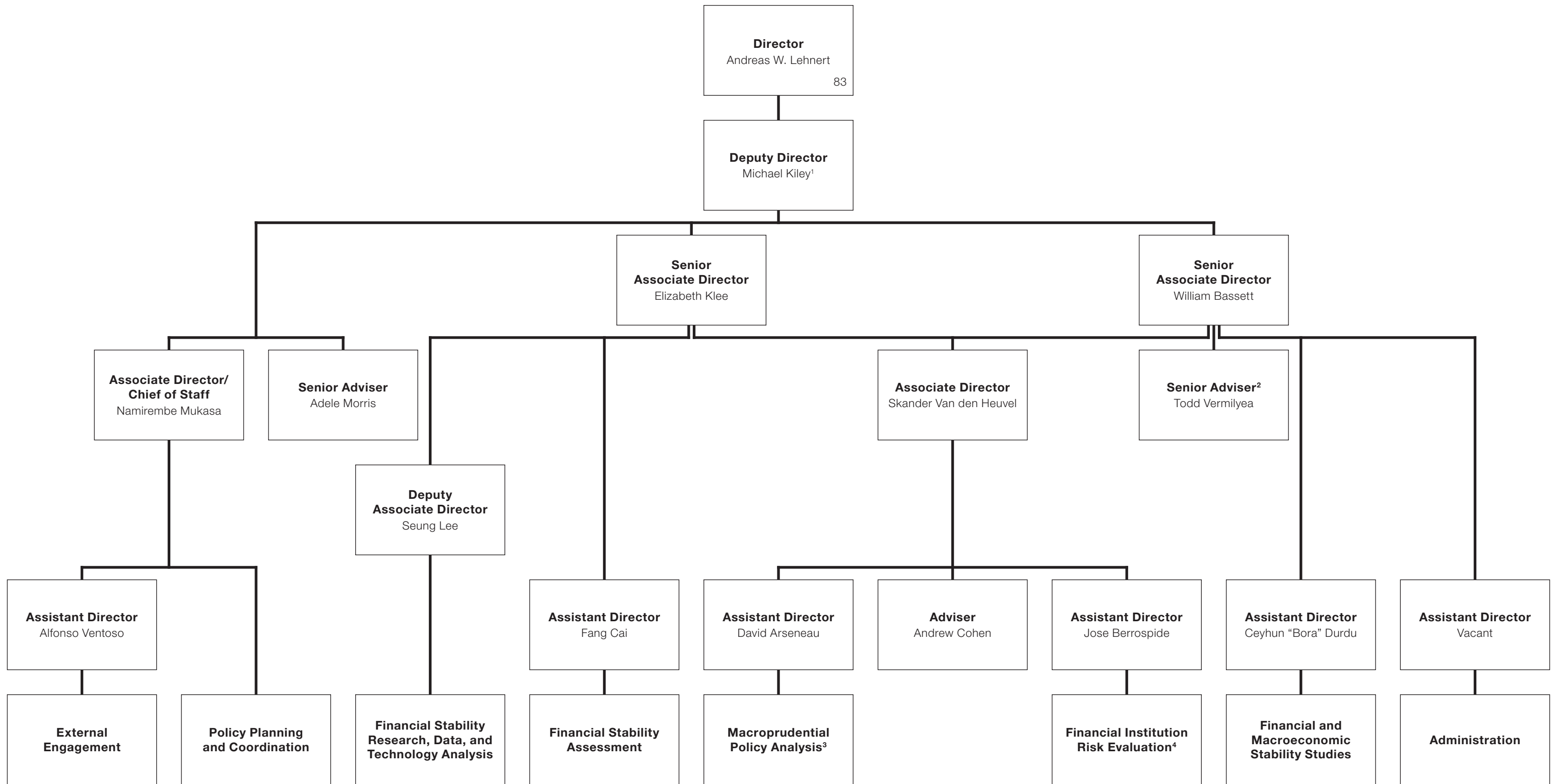


# Division of Financial Stability

January 17, 2024



<sup>1</sup> Michael Kiley is also a Special Adviser to the Board reporting directly to Michelle Smith in BDM.

<sup>2</sup> This position is temporary and does not count against the division position and officer count.

<sup>3</sup> Macroeprudential Policy Analysis reports to David Arseneau to Skander Van den Heuvel to Elizabeth Klee.

<sup>4</sup> Financial Institution Risk Evaluation reports to Jose Berrospide to Skander Van den Heuvel to William Bassett.