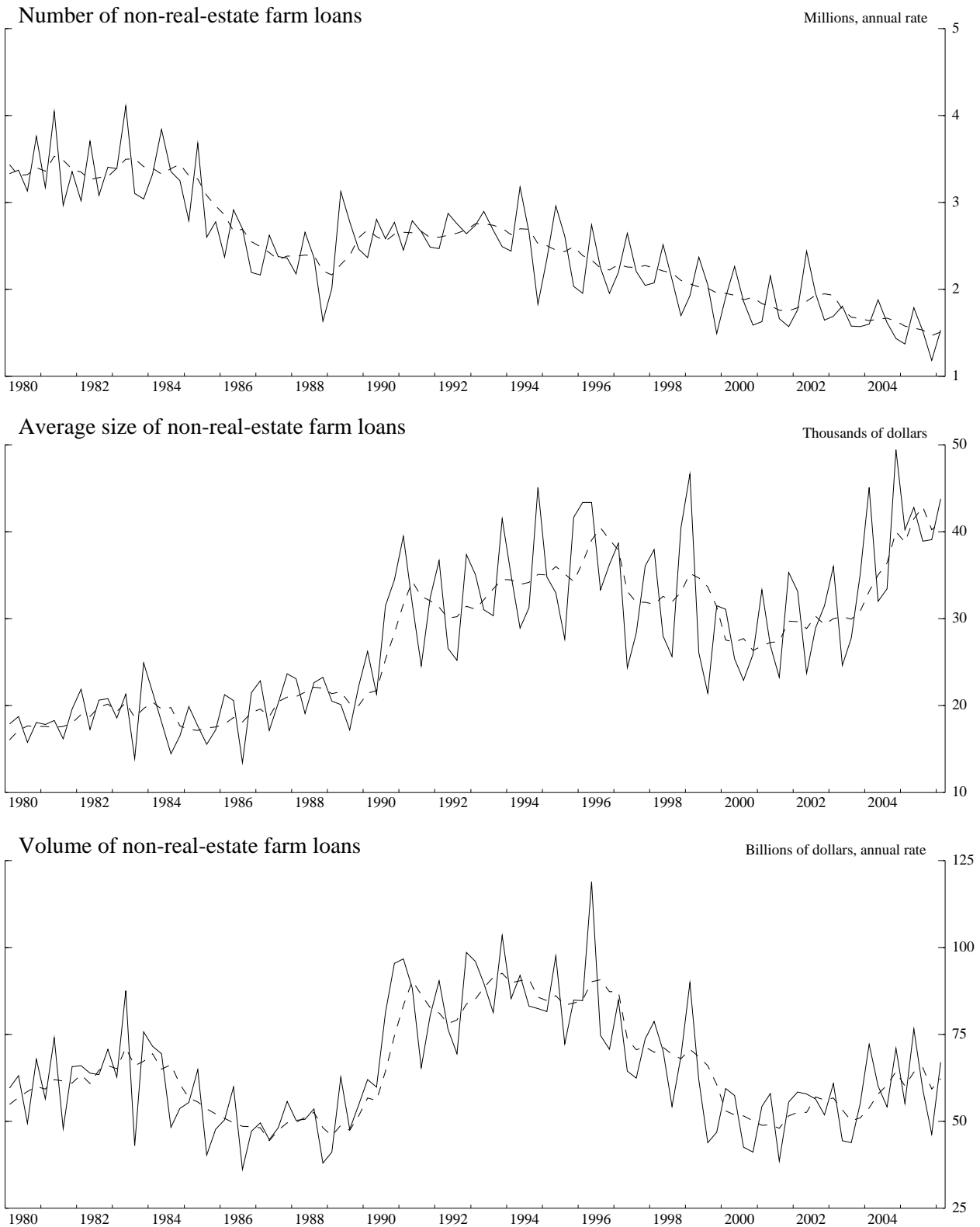


Chart 1

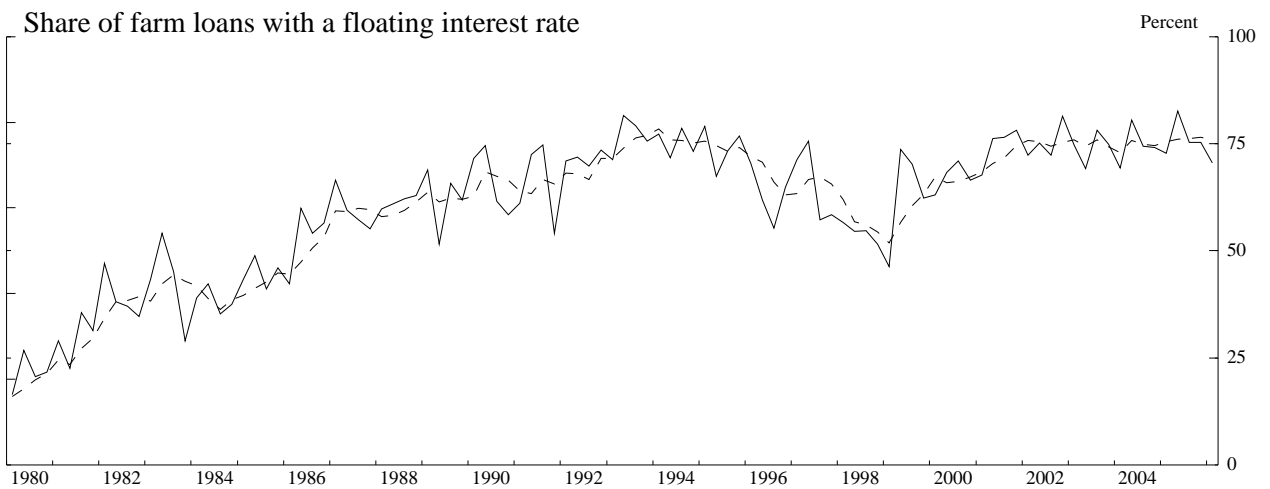
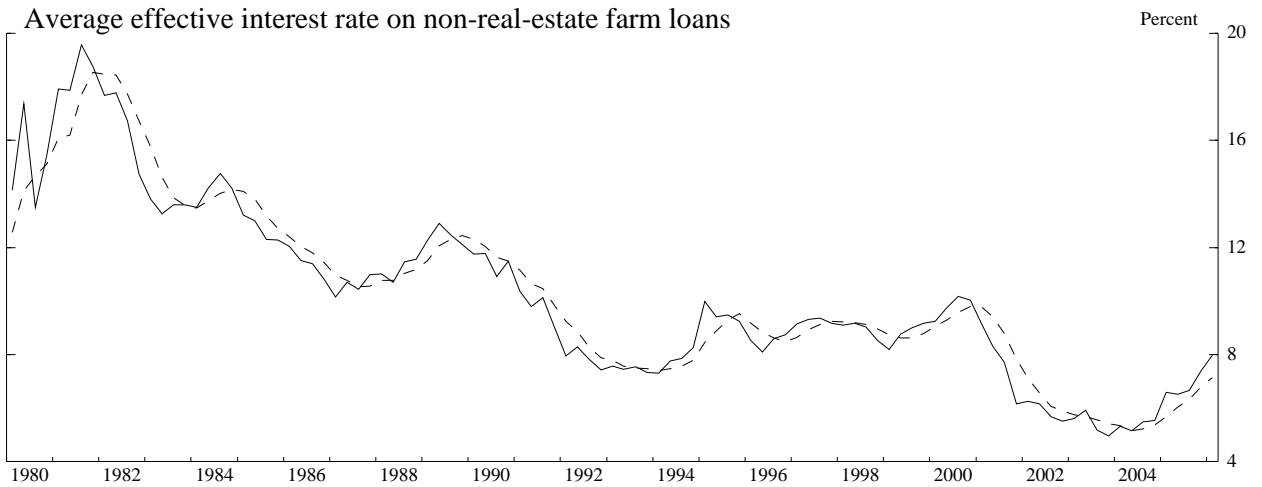
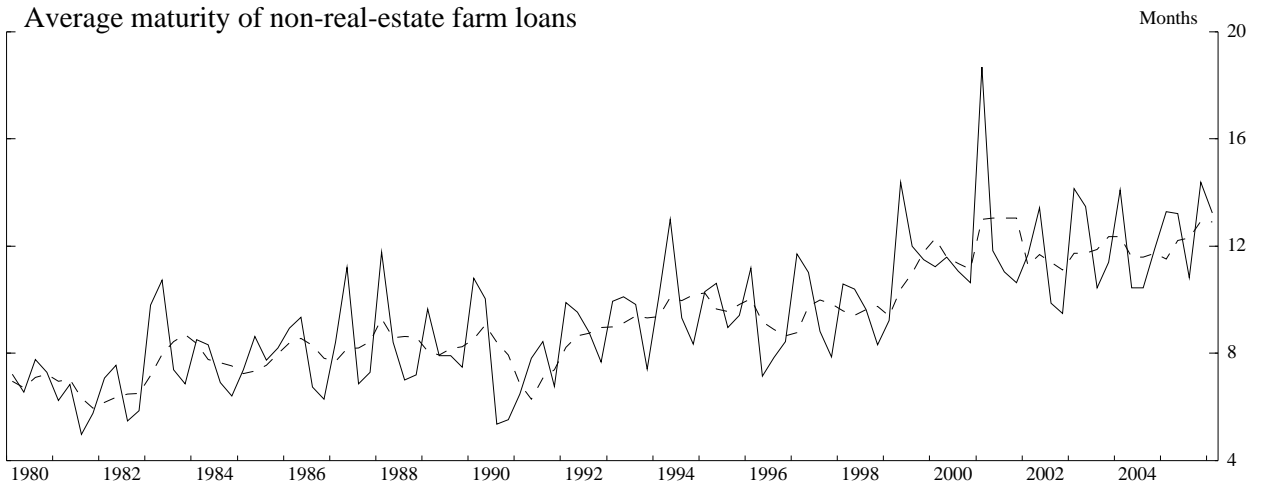
### Number, Size, and Volume of Non-real-estate Farm Loans, 1980-2006



-- Four-quarter moving average.  
Source. Survey of Terms of Bank Lending to Farmers.

Chart 2

### Maturity and Interest Rate of Non-real-estate Farm Loans, 1980-2006



Note. Effective (compounded) annual interest rates are calculated from the stated rate and other terms of the loans and weighted by loan size.

-- Four-quarter moving average.

Source. Survey of Terms of Bank Lending to Farmers.