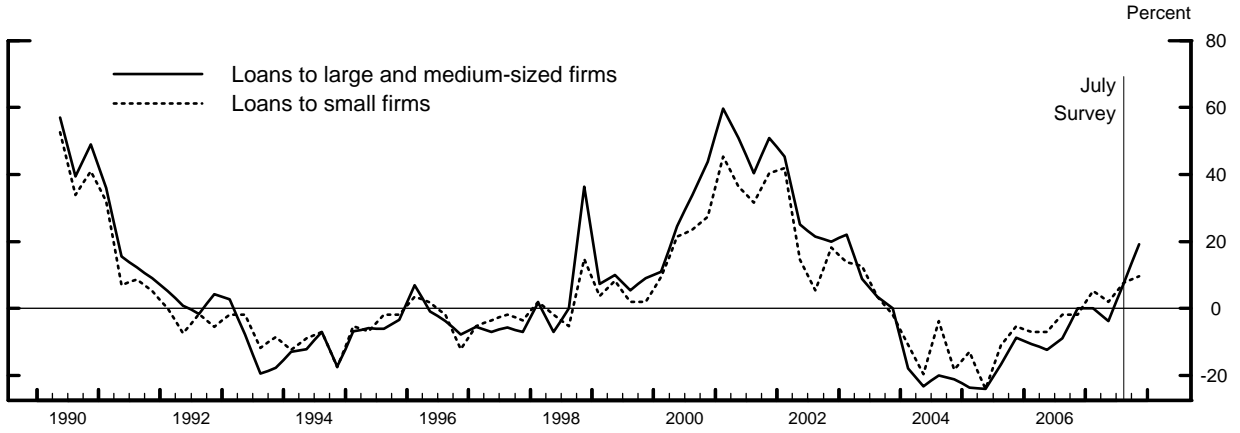
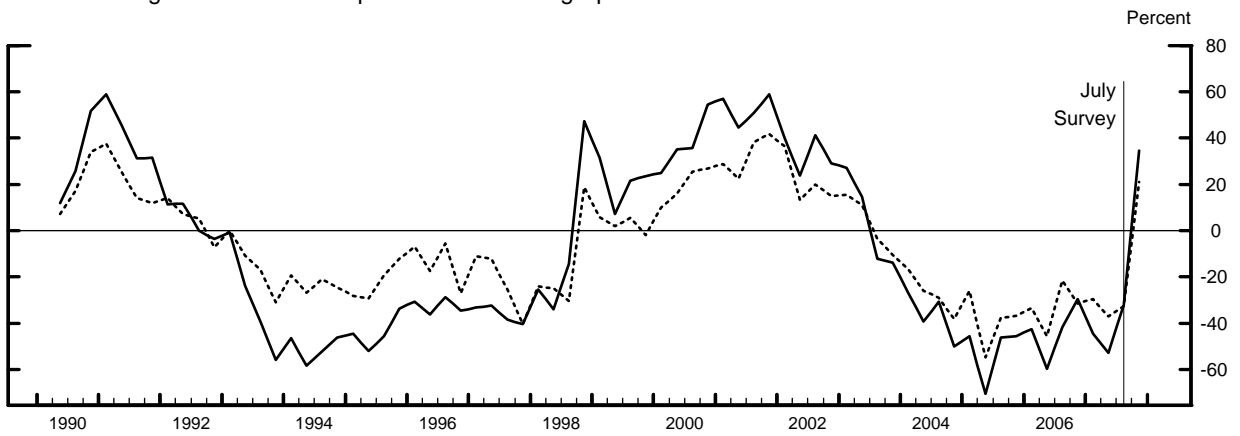


## Measures of Supply and Demand for C&I Loans, by Size of Firm Seeking Loan

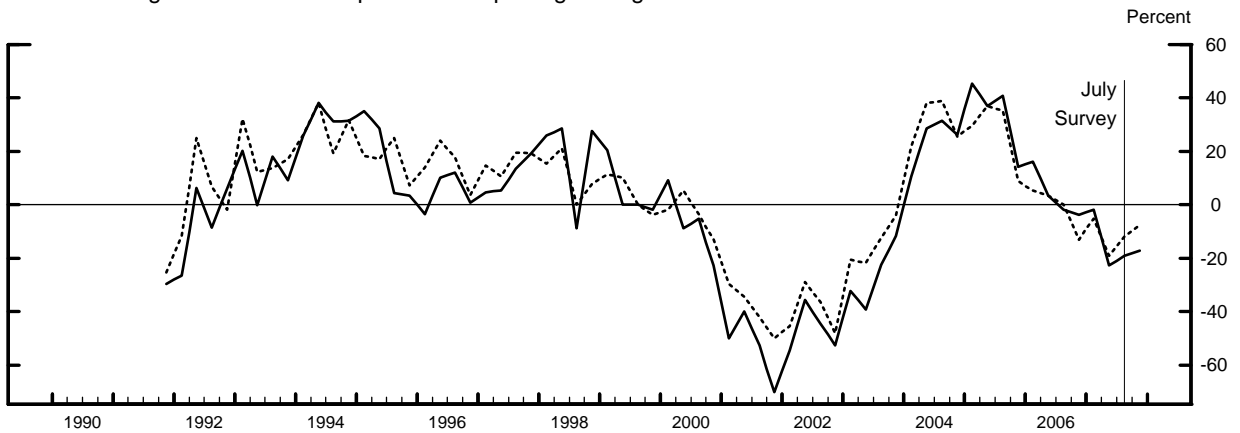
Net Percentage of Domestic Respondents Tightening Standards for C&I Loans



Net Percentage of Domestic Respondents Increasing Spreads of Loan Rates over Banks' Costs of Funds

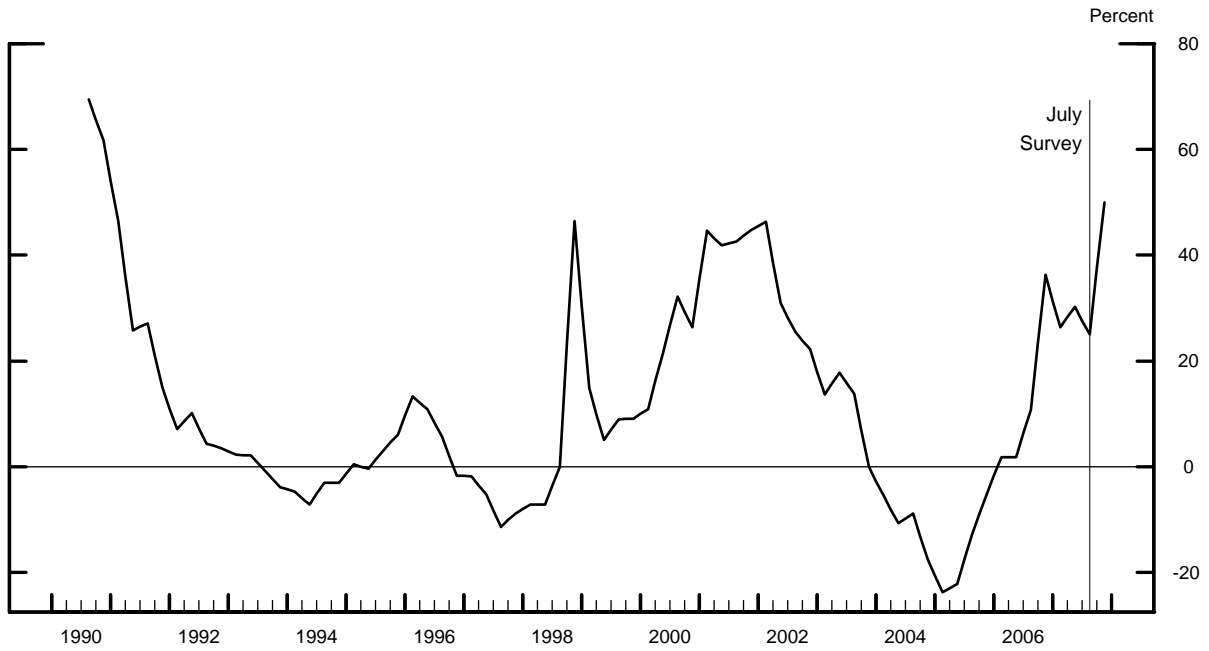


Net Percentage of Domestic Respondents Reporting Stronger Demand for C&I Loans

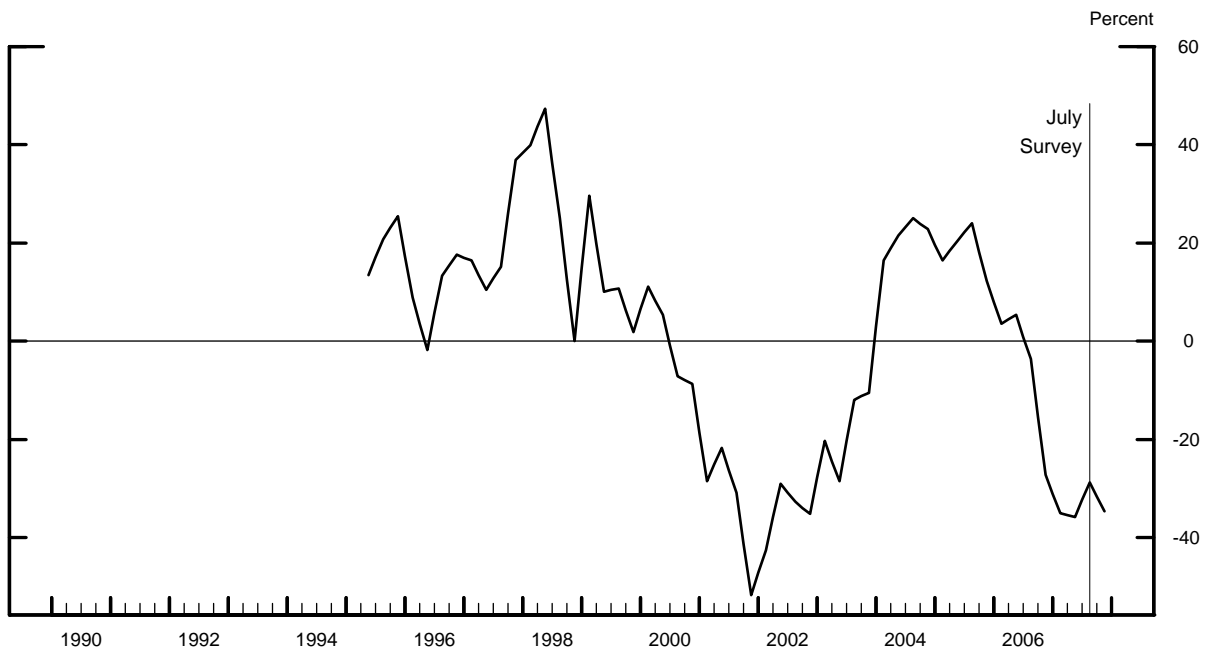


# Measures of Supply and Demand for Commercial Real Estate Loans

Net Percentage of Domestic Respondents Tightening Standards for Commercial Real Estate Loans

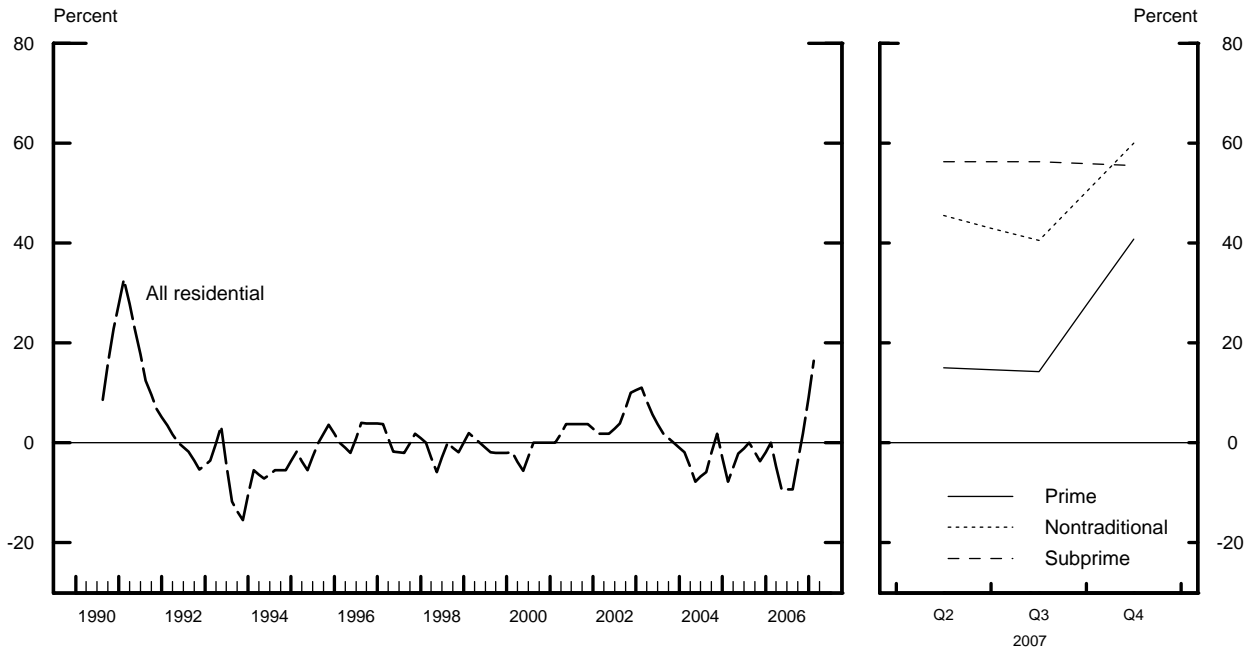


Net Percentage of Domestic Respondents Reporting Stronger Demand for Commercial Real Estate Loans



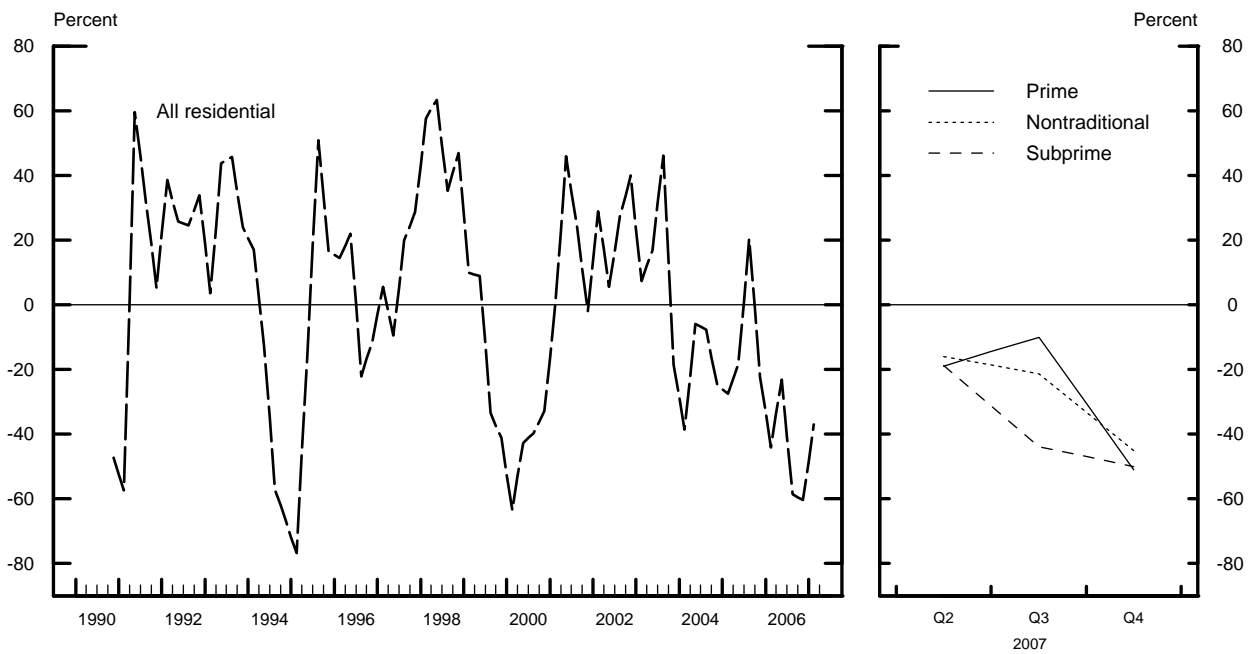
# Measures of Supply and Demand for Residential Mortgage Loans

Net Percentage of Domestic Respondents Tightening Standards for Residential Mortgage Loans



Note. For data starting in 2007:Q2, changes in standards for prime, nontraditional, and subprime mortgage loans are reported separately.

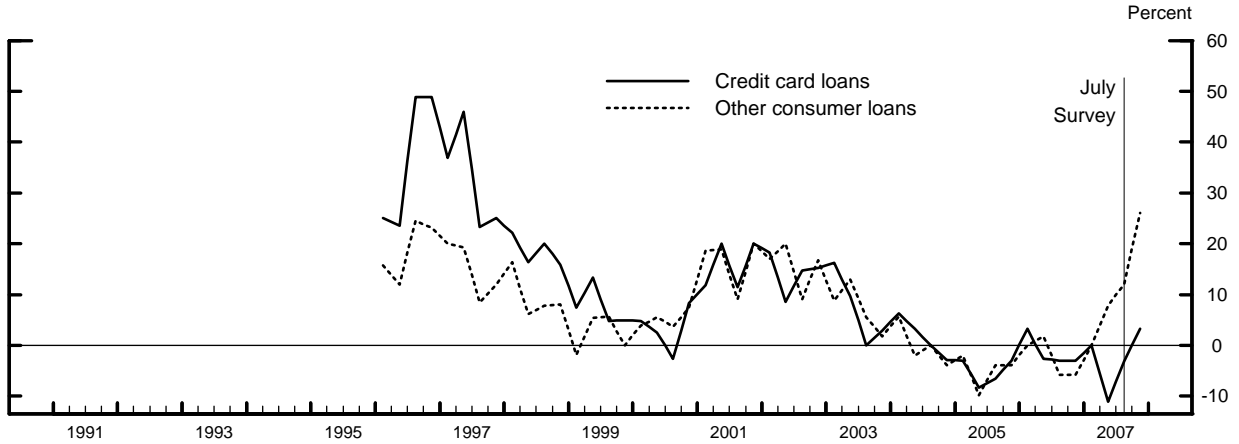
Net Percentage of Domestic Respondents Reporting Stronger Demand for Residential Mortgage Loans



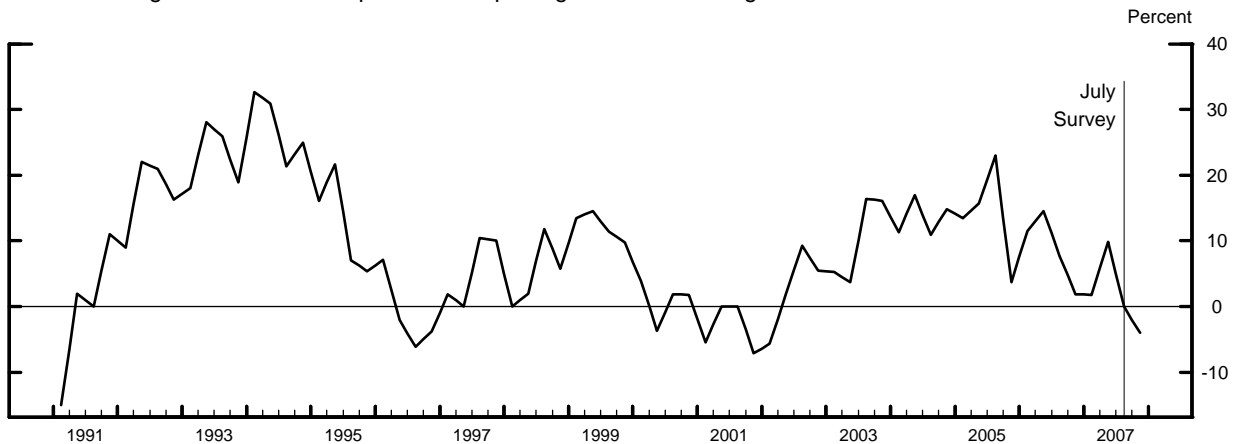
Note. For data starting in 2007:Q2, changes in demand for prime, nontraditional, and subprime mortgage loans are reported separately.

# Measures of Supply and Demand for Consumer Loans

Net Percentage of Domestic Respondents Tightening Standards for Consumer Loans



Net Percentage of Domestic Respondents Reporting Increased Willingness to Make Consumer Installment Loans



Net Percentage of Domestic Respondents Reporting Stronger Demand for Consumer Loans

