

**Finance and Economics Discussion Series
Divisions of Research & Statistics and Monetary Affairs
Federal Reserve Board, Washington, D.C.**

Liquidity, Default, Taxes and Yields on Municipal Bonds

Junbo Wang, Chunchi Wu, and Frank Zhang

2005-35

NOTE: Staff working papers in the Finance and Economics Discussion Series (FEDS) are preliminary materials circulated to stimulate discussion and critical comment. The analysis and conclusions set forth are those of the authors and do not indicate concurrence by other members of the research staff or the Board of Governors. References in publications to the Finance and Economics Discussion Series (other than acknowledgement) should be cleared with the author(s) to protect the tentative character of these papers.

Liquidity, Default, Taxes and Yields on Municipal Bonds

Junbo Wang, Chunchi Wu and Frank Zhang*

July 8, 2005

Abstract

We examine the relative yields of Treasuries and municipals using a generalized model that includes liquidity as a state factor. Using a unique transaction dataset, we are able to estimate the liquidity risk of municipals and its effect on bond yields. We find that a substantial portion of the maturity spread between long- and short-maturity municipal bonds is attributable to the liquidity premium. Controlling for the effects of default and liquidity risk, we obtain implicit tax rates very close to the statutory tax rates of high-income individuals and corporations, and these tax rate estimates are remarkably stable over maturities.

* Junbo Wang and Chunchi Wu are at Syracuse University, and Frank Zhang is at the Federal Reserve Board in Washington DC. Address correspondence to Chunchi Wu, Whitman School of Management, Syracuse University, Syracuse, NY 13244. Tel: 315-443-3399, fax: 315-443-5457 and email: cwu@syr.edu. An earlier version of this paper titled "Inferring Marginal Tax Rates from Green's Model with Default" was presented at the 2003 WFA Meeting in Cabo, Mexico. We thank Clifford Ball, John Chalmers, Pierre Collin-Dufresne, Cheng F. Lee, Suresh Sundaresan, Walter Torous, Rossen Valkanov, and Yuewu Xu for helpful comments. This paper represents the views of the authors and does not necessarily represent the views of the Federal Reserve Board or members of its staff.

The fixed-income securities market is an important segment in the U.S. financial markets. This market has been particularly innovative and experienced considerable growth recently. Not surprisingly, there has been extensive literature attempting to explain the yield spreads between different fixed income securities. A subject that has long intrigued financial researchers is how the yield spreads between tax-exempt and taxable securities are determined. Are default and liquidity risk priced in municipal bonds? What portion of these spreads is attributed to taxes, default, and liquidity risk? These issues are fundamentally important from an investment perspective due to the sheer size of the municipal market, which now approaches 1.9 trillion dollars.

Bond returns are subject to different tax treatments. Interest on municipal bonds is exempt from federal income taxes though not necessarily exempt from state taxes. By contrast, interest on Treasury and government agency bonds is subject to federal income taxes but exempt from state income taxes.¹ In equilibrium, one expects the after-tax returns of taxable and tax-exempt bonds to be equal if both have same maturity and comparable risk characteristics. The bond market thus provides an excellent financial laboratory to evaluate the impact of taxation on the relative values of tax-exempt and taxable bonds. The relative yields of taxable and municipal bonds should reflect the tax rate of the marginal investor who is indifferent between these two bonds. Therefore, one ought to be able to infer from the relative bond yields the implicit tax rate of the marginal investor reasonably expected to hold these bonds.

Unfortunately, empirical evidence has not conformed very well to this expectation but instead indicates that municipal bond yields are often higher than expected relative to yields on U.S. Treasury bonds. This anomaly is more pronounced for long-maturity

bonds. The relatively high yields of municipal bonds imply a tax rate lower than expected for the marginal tax rates of high-income individuals and corporations. Moreover, the implied marginal tax rate is much lower for long-maturity municipal bonds than for short-maturity bonds of similar quality and characteristics.

Several hypotheses have been advanced to explain the muni puzzle. The institutional demand hypothesis suggests that the marginal tax rate is determined by institutional trading activity (see Fortune, 1973; Galper and Peterson, 1971; Kimbal, 1977; Fama, 1997). Commercial banks can purchase municipals to shield their income from taxes. An increase in their demand causes municipal yields to fall and the implicit tax rate to rise. Since commercial banks prefer short-term bonds, the implicit tax rate would tend to be high for these bonds relative to long-term bonds.² Other explanations for the yield curve anomaly include tax-timing options (Constantinides and Ingersoll, 1984), clientele effects (Mussa and Kormendi, 1979; Kidwell and Koch, 1983), and changes in tax regimes (Poterba, 1989).

While the arguments above have some merit, it remains unclear whether they can fully explain the anomalous behavior of municipal yield curves. In an important paper, Green (1993) proposes an alternative model to explain the behavior of taxable versus tax-exempt yields. A basic argument in this model is that high-tax investors generally prefer portfolios of taxable bonds that are tax-advantaged (or tax-efficient) to individual taxable bonds with similar pretax cash flows. In particular, they can avoid taxes on coupon

¹ Unlike Treasuries and municipals, corporate bond interest is subject to both federal and state taxes.

² Along a similar line on institutional demand but with a different focus, Green and Odegaard (1997) indicate that many institutions such as pension funds are either not taxed at all or have much lower taxes than individuals. If any of these institutions invests heavily in long-term taxable bonds, the yield on long-maturity taxables will be lower. This will lower the yield spread between taxables and tax-exempts as well as the implicit tax rate.

income by constructing portfolios of taxable bonds that generate offsetting losses or investment interest expenses. If these investors are marginal across these portfolios and municipals bonds, they will apply the same discount factors to the after-tax cash flows from both positions. Using this relationship, Green obtains investors' implicit valuation of the pretax cash flows from par taxable bonds. By appealing to the arbitrage activities of dealers and tax-exempt institutions, he derives an equilibrium model to explain the relative yields of taxable versus tax-exempt bonds. The intuition behind this model is that investors holding both taxables and municipals may not regard coupon income as fully taxable at the margin because of the offsetting investment interest elsewhere in their portfolios. These implicit tax benefits tend to increase with maturity, thus pulling down the yield curve of taxable bonds at the long end.

Empirical evidence shows that Green's model explains a considerable portion of the relative yield differences between taxable and tax-exempt bonds (see Green, 1993). Chalmers (1995) finds that Green's model cannot be rejected. However, although this model replicates the differences in curvature between the taxable and tax-exempt yield curves reasonably well, it continues to underestimate the long-term tax-exempt yields.³ Also, the predictive ability of the model does not hold up very well especially when there are significant changes in statutory tax rates. While changes in tax regimes may be blamed, these problems can also be caused by missing factors. Of particular concern is that default and liquidity risk of municipal bonds are ignored in this model.

Municipal bonds are not risk-free and to some extent may even be riskier than corporate bonds in the same rating class due to the unique features of municipal assets and less predictable political processes (see Hempel, 1972; Zimmerman, 1977; and

Trzcinka, 1982).⁴ Although municipal bonds were traditionally considered to be only second to U.S. Treasuries in safety, defaults on municipal bonds since the late 1970s, along with other problems, have raised concern about the credit risk of municipal bonds. For example, of the municipal bonds issued between 1977 and 1998, 1,765 out of a total of 253,850 issues were defaulted, with a face value of \$24.9 billion out of a total of \$375.5 billion (see Litvack and Rizzo, 1999). Thus, the probability of default may not be trivial and is of potentially greater concern for low-rated uninsured municipals.

Empirical evidence on the role of default risk is inconclusive. Several studies (e.g., Trzcinka, 1982; Yawitz, Maloney and Ederington, 1985; Scholes and Wolfson, 1992; Kim, Ramaswamy and Sundaresan, 1993; Stock, 1994; and Liu, Wang and Wu, 2003) show that credit risk differences explain the relative yields of taxable and tax-exempt bonds.⁵ However, other studies (Gordon and Malkiel, 1981; Skelton, 1983; Ang, Peterson and Peterson, 1985; Green, 1993; and Chalmers, 1998) find that differential default risk cannot explain the municipal bond puzzle. A perplexing finding is that the term structure of municipal bonds remains steeper than that of the U.S. Treasuries even after the effect of default risk is controlled.

An important factor completely left out by previous municipal bond pricing models is liquidity risk. The municipal market is very illiquid compared to the U.S. Treasury bond market or the equity, futures and foreign exchange markets. Several

³ See Green (1993), p. 236.

⁴ Municipal assets cannot be seized as easily as corporate assets in bankruptcy proceedings because they may be physically difficult to seize or legally protected. In addition, the incentive problem or moral hazard is perceived to be more severe for municipalities.

⁵ Kim, Ramaswamy and Sundaresan (1993) provide a theoretical explanation for why default risk may cause the term structure to have a steeper slope. They argue that credit spreads for high-quality coupon bonds increase with maturity because longer bonds have more coupons subject to default risk. This relationship between the credit spread and term to maturity can also explain the higher relative yields of municipal bonds.

reasons have contributed to low liquidity in the municipal bond market. First, the municipal bond market is a very thin market; many municipal bonds are traded only a few times after issuance (see Downing and Zhang, 2004). Average weekly muni trading volume is generally less than 12 percent of Treasury trading volume. On the other hand, the number of muni bonds far exceeds Treasuries; well above one million different municipal securities are issued by over 50,000 state and local governments (see Fabozzi, 1997). Thus, most individual muni bonds are traded infrequently. Second, the municipal market is much less transparent in terms of the availability of basic information for trading activity. Information for individual bond transactions has not been publicly disclosed until very recently and comprehensive trade volume and price data were only publicly available after a two-week lag.⁶ Third, the municipal bond market is also less transparent in terms of information about the bond issuers because they are not subject to the same financial disclosure requirements as are publicly traded corporations.⁷ Lack of transparency considerably increases the information cost of trading and reduces liquidity.⁸

Although it has been long recognized that the municipal market is illiquid and liquidity risk is a potentially important determinant of municipal yields, few studies have provided a quantitative assessment of the size of the liquidity risk premium. A primary reason for the lack of empirical research is that reliable transaction data for municipal bonds were virtually non-existent until very recently. Thus, how much municipal bond

⁶ Beginning in January 2005, the problem of lagged release in trading information has diminished.

⁷ Most municipal bond issuers only release detailed financial information when they float a bond, while publicly traded corporations are required to maintain a quarterly data feed on their activities (e.g., 10-Q and 10-K reports).

⁸ Harris and Piwowar (2004) report that the effective spreads in muni bonds average almost 2 percent of price for representative retail-sized trades (20,000 dollars) while the average yield to maturity is close to 6 percent.

yield is attributable to liquidity risk remains unclear. In this paper, we are able to estimate the liquidity premium of municipal bonds by using the transaction database recently made available by the Municipal Securities Rulemaking Board. As such, this paper represents the first empirical study of the effect of liquidity risk on the relative municipal bond yield curve using transaction data.

The model that we propose accounts for the effects of both liquidity and default risk on the relative yields of taxable and tax-exempt bonds. Most studies on the liquidity effect have focused on equity markets where transaction data are easily accessible. An exception is Harris and Piwowar (2004), which examines transaction costs and trading volume in the U.S. municipal bond market. Unlike their studies, we focus on the sensitivity of municipal yields (or expected returns) to liquidity risk and examine its effect on the equilibrium pricing of municipal bonds. Specifically, we investigate the effect of systematic liquidity risk on bond yields instead of the level of liquidity cost *per se*. We construct a broad liquidity measure for the municipal market along the line of Pastor and Stambaugh (2003), which captures temporary price fluctuations induced by order flow. By incorporating liquidity as an additional state factor in municipal bond yields, we find that the explanatory power of the model is greatly improved.

Our empirical results show that the liquidity risk premium accounts for a significant portion of municipal bond yields. Results suggest that investors require a higher yield on those municipal bonds whose returns are more sensitive to aggregate market liquidity. Within a rating class, the sensitivity of municipal yields to market-wide liquidity increases monotonically with maturity. At the same time, controlling for maturity, the sensitivity of municipal yields to market-wide liquidity increases

monotonically as the bond rating drops from AAA to BBB. Liquidity premium explains about 7 to 13 percent of the observed municipal yields for AAA bonds, 7 to 16 percent for AA/A bonds and 8 to 20 percent for BBB bonds with different maturities. Ignoring the liquidity risk effect thus results in an underestimation of municipal bond yields.

Including liquidity risk in the pricing model also helps explain the municipal yield curve anomaly. Long-maturity municipal yields are high relative to the equivalent after-tax yields of Treasury bonds, partly due to liquidity risk. Our results show that the liquidity risk premium alone accounts for 65 basis points (bps) for AAA bonds, 79 bps for AA/A bonds and 111 bps for BBB bonds with 20-year maturity. In contrast, liquidity risk premiums are only 14 bps, 16 bps and 23 bps for 1-year AAA, AA/A and BBB bonds, respectively. Thus, the liquidity premium accounts for a substantial portion of the maturity spread between 20-year and 1-year bonds. Controlling for the effects of default and liquidity risk, we obtain implicit income tax rates very close to the statutory tax rates of high-income individuals and corporations. More importantly, these implicit tax rates are very stable when estimated from observed yields of bonds with different maturities.

Furthermore, our liquidity premium estimates are highly correlated with traditional liquidity variables. We find that municipal bonds with high volume and trading frequency and larger issue size have a low liquidity risk premium. Thus, the Pastor-Stambaugh method, which we employ to construct the aggregate liquidity of the municipal bond market, is quite effective in abstracting the liquidity feature of the bonds. Overall, our results show that the generalized model with liquidity risk explains the behavior of Treasury and municipal yield curves very well.

The remainder of this paper is organized as follows. Section I reviews the related literature on municipal bonds. Section II proposes a generalized municipal bond model to incorporate the effects of default and liquidity, and discusses the empirical methodology. Section III describes the data sample and Section IV presents empirical results for municipal bonds of different ratings, maturities and trading characteristics. Finally, Section V summarizes major findings and concludes the paper.

I. Related Literature

Traditional models of the yield relationship between taxable and tax-exempt bonds assume that investors are at the margin on all bonds. They can trade freely without any friction, and the taxation of long and short positions is completely symmetric. Investors apply the same discount factors to the after-tax cash flows from both taxable and tax-exempt bonds. In addition, it is assumed that municipal bonds are default-free and priced at par, and investors hold them to maturity. Given these conditions, it follows that the yield on the tax-exempt bond (M_t) is simply equal to the yield on the taxable bond (C_t) times one minus the marginal investor's tax rate τ :

$$M_t = C_t(1 - \tau) \tag{1}$$

Miller (1977) hypothesizes that in equilibrium, corporate capital structure decisions will force the tax rate in (1) to be the top marginal corporate tax rate. Fama (1977) predicts that the equilibrium tax rate equals the highest marginal corporate income tax rate because banks were able to deduct interest expenses incurred to invest in municipal bonds from their taxable income.

Empirical evidence has shown that the implied tax rates estimated from (1) are considerably lower than the statutory tax rates for high-income individuals and

corporations, particularly for long-maturity municipals. There have been attempts to explain this anomaly. The clientele hypothesis argues that long- and short-term bond markets may be dominated by different groups of investors. Changing tax regimes can also incur investment risk and affect bond values, particularly for long-maturity municipals (see Poterba, 1989). Furthermore, inferior tax-timing options on municipal bonds may raise the relative yields especially for long maturity municipals (see Constantinides and Ingersoll, 1984).⁹

Trzcinka (1982) argues that ignoring the time-varying risk premium results in an underestimation of the implicit marginal tax rate.¹⁰ He suggests including a random intercept term in the yield relationship of (1) to capture the time-varying risk premium:

$$M_t = A_t + \beta C_t \quad (2)$$

where A_t is the time-varying risk premium and $\beta = 1 - \tau$. In this model, A_t is included to allow for the differences in default risk between tax-exempt and taxable bonds.

Yawitz, Maloney and Ederington (1985) demonstrate that if two bonds have different probabilities of default, β will depend on the relative magnitudes of these probabilities and thus cannot be interpreted as an estimate of $1 - \tau$. Specifically, they show that in equilibrium the following yield relationship holds:

$$M_t = \alpha_t + \beta_t C_t \quad (3)$$

where $\alpha_t = \frac{\lambda_t}{1 - \lambda_t}(1 - \tau_g)$, and $\beta_t = \frac{1 - \tau}{1 - \lambda_t}$, λ_t is the default probability at time t , τ is the

ordinary income tax rate and τ_g is the capital gain (or loss) tax rate.¹¹

⁹ An investor purchasing a taxable bond at a premium can amortize the premium against interest income over the remaining life of the bond. By contrast, the premium on a tax-exempt bond cannot be so amortized. In addition, capital gains from selling municipal bonds are subject to federal taxes.

Green (1993) proposes a different model that considers investors' ability to shield coupon income from taxation. Taxable investors may form a tax-advantaged portfolio to avoid taxes on the cash flows received before maturity by the following trading strategy. Suppose there is a par bond with coupon rate C and maturity date T and another par bond with coupon rate $C/2$ and the same maturity date but traded at a discount. A long position with two $C/2$ coupon bonds and a short with one C coupon bond will result in no coupon income and hence, no net tax liability prior to maturity. This strategy can be applied to any bonds with different coupons to form a tax-advantaged portfolio. While individual investors may be precluded from holding this type of tax-advantaged portfolio due to limitations on interest deductions from borrowings and short positions, bond dealers are not. Therefore, from a dealer's point of view, cash flows from par bonds and a sequence of pure principal payments are equivalent. Any difference in price between a pair of bonds or bond portfolios with identical income streams creates an arbitrage opportunity for dealers.

Specifically, to the investor who pursues the above strategy to generate net zero coupon payments, the after-tax cash flow of the position is $1 - \tau(1 - P_t)$ where P_t is the cost of the position at time t , which is equal to the total price of two $C/2$ coupon bonds minus the price (=1) of one C coupon bond assumed equal to par. The price P_t of this position must then be equal to the discounted after-tax value of its cash flow:

$$P_t = [1 - \tau(1 - P_t)]d_t \quad (4)$$

where d_t is the after-tax discount factor. Solving for P_t yields

¹⁰ A similar argument is made by Wu and Yu (1996) in a different context.

¹¹ Wu (1991) extends Yawitz et al. (1985) to consider investors' risk-averse behavior and finds that the slope coefficient further depends on risk premium.

$$P_t = \frac{(1-\tau)d_t}{1-\tau d_t} \quad (5)$$

From the dealer's viewpoint, cash flows from par bonds with maturity T and a sequence of pure principal payments are equivalent and so they should have the same price; that is,

$$1 = \sum_{t=1}^T C_T P_t + P_T \quad (6)$$

Substituting P_t in (5) into (6) gives

$$1 = \sum_{t=1}^T C_T \frac{(1-\tau)d_t}{1-\tau d_t} + \frac{(1-\tau)d_T}{1-\tau d_T} \quad (7)$$

At the same time, the value of a par municipal bond with equal maturity will be equal to

$$1 = \sum_{t=1}^T M_T d_t + d_T \quad (8)$$

Combining (7) and (8), one can obtain the following equilibrium relationship between the yield curves of municipals and Treasuries:¹²

$$M_T = C_T (1-\tau) \frac{\sum_{t=1}^T \frac{d_t}{1-\tau d_t}}{\sum_{t=1}^T \frac{d_t}{1-\tau d_T}} \quad (9)$$

where $d_t = \frac{P_t}{(1-\tau(1-P_t))}$ is the after-tax discount factor for the cash flow at time t , and

P_t is the pretax discount factor of a zero-coupon default-free taxable bond. The model implies that the ratio of the tax-exempt yield to the taxable yield, M_T/C_T , increases with maturity. When maturity $T = 1$, the ratio multiplying the after-tax coupon on the right side of (9) is equal to one, and $1 - M_T/C_T$ gives the tax rate of the marginal investor. For

longer maturities, the ratio multiplying the after-tax coupon is greater than one if forward rates are positive ($d_T < d_t$ for $t < T$). The longer the maturity, the larger this ratio, making M_T increasingly large relative to C_T . Thus, if one uses the formula $1 - M_T/C_T$ to obtain the implicit tax rate from the yields of taxable and tax-exempt bonds, the resulting estimate will be biased downward.

While Green's (1993) model is quite appealing, it does not consider the effects of liquidity and credit risk. Unlike Treasury securities, municipal bonds are subject to default. In addition, compared to the Treasury market, the municipal market is very illiquid. These two factors can complicate the equilibrium yield relationship. Liu, Wang and Wu (2003) consider the effect of default risk on municipal yields. They argue that ignoring default risk may result in a biased estimation of the implicit marginal income tax rate for long-maturity bonds. However, several studies have shown that for default risk to explain the muni yield puzzle, the implied default probabilities for municipals would have to be unreasonably large (see, for example, Poterba, 1986; Jordon and Jordan, 1990; and Green, 1993). Chalmers (1998) uses a large sample of municipals over an extended sample period to examine the issue and finds that default risk cannot explain the muni yield puzzle. Thus, default risk alone does not appear to be able to provide the answer to the empirical puzzle.

In this paper, we explore the role of liquidity risk in municipal bond pricing. We take advantage of a unique transaction dataset recently made available by the Municipal Securities Rulemaking Board to estimate the liquidity risk of municipals and examine its effect on bond yields. To the extent that illiquidity can significantly affect the municipal bond yields, analyzing the effect of liquidity risk should shed light on the muni puzzle.

¹² See Green (1993) for the details of derivation.

In the following section, we propose a generalized municipal bond model with default and liquidity risk and discuss the empirical estimation procedure.

II. A Generalized Municipal Bond Pricing Model

A. The Model

Following Green (1993), we assume that municipal and Treasury bonds are priced at par and both are noncallable. In addition, investors pursue a buy-and-hold strategy. However, unlike his model, municipal bonds are subject to default. The probability of default at time t is λ_t and the recovery rate is δ when default occurs.¹³

When there is no default, the present value of the payoff for the municipal bond is

$$\left(\sum_{t=1}^T M_T d_t + d_T \right) \prod_{t=1}^T (1 - \lambda_t) \quad (10)$$

Conversely, when default occurs, the bond investor receives a residual (recovery) amount δ . The present value of the expected cash flow of the municipal bond if default occurs at time i , is given by

$$\left(\sum_{t=1}^{i-1} M_T d_t + \delta \right) \lambda_i \prod_{k=1}^{i-1} (1 - \lambda_k) \quad (11)$$

where δ is expressed in terms of present value. The value of the municipal bond at time t is equal to the sum of (10) and (11). Because we assume that the municipal bond is priced at par, the pricing formula can be written as

$$1 = \left(\sum_{t=1}^T M_T d_t + d_T \right) \prod_{t=1}^T (1 - \lambda_t) + \sum_{i=1}^T \left[\left(\sum_{t=1}^{i-1} M_T d_t + \delta \right) \lambda_i \prod_{k=1}^{i-1} (1 - \lambda_k) \right] \quad (12)$$

Combining the pricing formula for Treasuries in (7) with (12), we obtain the following equilibrium relationship between municipal and Treasury yields:

¹³ The recovery rate is formulated as a fraction of the face value.

$$M_T = \frac{C_T \sum_{t=1}^T \frac{(1-\tau)d_t}{1-\tau d_t} + \frac{d_T \left[1 - \prod_{i=1}^T (1-\lambda_i) \right] - \delta \sum_{i=1}^T \left[\lambda_i \prod_{k=1}^{i-1} (1-\lambda_k) \right]}{1-\tau d_T}}{\frac{1}{1-\tau d_T} \left\{ \sum_{t=1}^T d_t \prod_{i=1}^T (1-\lambda_i) + \sum_{i=1}^T \left[\left(\sum_{t=1}^{i-1} d_t \right) \lambda_i \prod_{k=1}^{i-1} (1-\lambda_k) \right] \right\}} \quad (13)$$

The pricing formula above is not complete because it does not include the effect of liquidity risk, which is considered to be a critical factor for municipal bond pricing. Liquidity is perceived as an important feature of the investment environment. Previous studies have shown that the *level* of liquidity affects expected asset returns (see, for example, Amihud and Mendelson, 1986, 1991; Brennan and Subrahmanyam, 1996; Brennan, Chordia and Subrahmanyam, 1998; and Amihud, 2002). That the level of liquidity can affect transaction cost and asset price is not surprising. What is more important is whether liquidity risk is a systematic risk that affects equilibrium asset returns. In an influential paper, Pastor and Stambaugh (2003) show that expected stock returns are significantly affected by systematic liquidity risk. They suggest that it should be fruitful to examine the liquidity in the bond market and its impact on pricing, since the effect of liquidity risk on bond returns can potentially be quite different from that on stock returns.¹⁴

To account for the effect of liquidity risk, we add a liquidity risk variable to (13) and rewrite it in a more compact form:

$$M_T = A_T + \beta_T C_t + \beta_L L \quad (14)$$

¹⁴ Recent studies in fixed-income markets have found that traditional term structure models of defaultable bonds explain only a small portion of yield spreads (see, for example, Huang and Huang, 2003). A potential cause is that liquidity risk is not accounted for by these models. Longstaff, Mithal and Neis (2005) find that the liquidity premium accounts for a significant portion of corporate bond spreads. Since

where

$$A_T = \frac{d_T \left[1 - \prod_{t=1}^T (1 - \lambda_t) \right] - \delta \sum_{i=1}^T \left[\lambda_i \prod_{k=1}^{i-1} (1 - \lambda_k) \right]}{1 - \tau d_T} \\ = \frac{1}{1 - \tau d_T} \left\{ \sum_{t=1}^T d_t \prod_{t=1}^T (1 - \lambda_t) + \sum_{i=1}^T \left[\left(\sum_{t=1}^{i-1} d_t \right) \lambda_i \prod_{k=1}^{i-1} (1 - \lambda_k) \right] \right\}$$

and

$$\beta_T = \frac{\sum_{t=1}^T (1 - \tau) d_t}{1 - \tau d_T} \\ = \frac{1}{1 - \tau d_T} \left\{ \sum_{t=1}^T d_t \prod_{t=1}^T (1 - \lambda_t) + \sum_{i=1}^T \left[\left(\sum_{t=1}^{i-1} d_t \right) \lambda_i \prod_{k=1}^{i-1} (1 - \lambda_k) \right] \right\}$$

β_L is the sensitivity of the yield of an individual municipal bond or portfolio to the aggregate liquidity L of the municipal market. Equation (14) states that in equilibrium the municipal bond yield equals the adjusted Treasury bond yield (the first two terms on the right hand side adjusted for tax and default effects) plus a systematic liquidity risk premium, which compensates for the low liquidity of municipal bonds relative to Treasuries of equal maturity. This yield model can be applied to municipal bonds of any rating and maturity by allowing default and liquidity risk to vary.

Standard asset pricing theory suggests that expected security returns are related to returns' sensitivities to state factors. If liquidity is one of these state factors, investors will require higher expected returns on securities that are more sensitive to aggregate market liquidity. This theoretical argument holds not only for equities but also for fixed-income securities in general. Thus, municipal securities should be no exception. If municipals are less liquid than Treasury securities, investors should demand higher yields

the municipal market is very illiquid by conventional standards, liquidity risk could also be very important for pricing municipal bonds.

(or expected returns) from holding municipals to compensate for this risk. Likewise, in the domain of municipal securities, those municipals whose returns have higher sensitivities (β_L) to aggregate market liquidity should offer higher yields than other municipals with lower sensitivities.

Intuitively, the role of liquidity in securities pricing would depend on the importance of liquidity for a specific investment and the liquidity condition of a market relative to others. Since the municipal market is relatively illiquid compared to other markets, liquidity risk would likely be an important pricing factor for municipal bonds. When there is a widespread deterioration in liquidity, it will be more difficult to liquidate municipal bonds than Treasuries securities. In anticipation of costly liquidation in a low liquidity environment, investors will require higher yields to compensate for this risk regardless of the tax-exempt advantage of municipals. Furthermore, the trade size of municipals is typically larger than that of equity transactions. Liquidity is expected to be more valuable for investors trading large orders than small orders even in routine transactions. In an unusual situation when the aggregate market liquidity dries up, it will be much more difficult to trade large quantities. Taken together, liquidity risk should be more serious concern for municipal investors and if so, this would have a significant implication for municipal bond pricing.¹⁵

The relevance of liquidity risk to municipal bond pricing is measured by the sensitivity coefficient β_L to the aggregate liquidity of the municipal bond market. Similar to the risk measure in traditional asset pricing models, β_L captures the systematic

¹⁵ The importance of liquidity is well spelled out by the recent event associated with the reduction in personal taxes on regular income and dividends by the Bush Administration. The event triggered a sell-off

risk (liquidity beta) of individual municipal bonds to the market-wide liquidity. We use the aggregate liquidity measure of the municipal market itself to estimate liquidity beta for the following reasons. First, since an individual financial market typically exhibits commonality in liquidity, it justifies the estimation of systematic liquidity risk of a municipal bond by its co-variation with the liquidity innovations of the overall municipal market. The rationale is that those municipal securities whose returns are more exposed to market-wide liquidity fluctuations should have higher yields (expected returns). Second, the Treasury yield (C_t) on the right hand side of the model in (14) has impounded the effect of the Treasury liquidity risk and so there is no need to add the liquidity innovations of the Treasury market as an additional explanatory variable in the municipal yield model.

To estimate liquidity risk β_L , we need to construct a market-wide liquidity measure (L) for municipal bonds. In the following, we outline the procedure for constructing a measure of aggregate liquidity for the municipal bond market in the spirit of Pastor and Stambaugh (2003).

The proposed aggregate liquidity measure captures temporary price changes associated with order flow. The fundamental argument is that lower liquidity tends to correspond to stronger price reversals on the next trading day, resulting from the order flow in a given direction on a particular day. For example, in the absence of private information, a large number of sell orders (or a high sell volume) on a particular day will cause a greater price rebound on the next trading day. This dimension of liquidity can be gauged by the response of municipal returns in the next trading day to the signed volume

in the municipal market as the tax-advantage of municipals was eroded. Because liquidity was low, the sell-off had a tremendous impact on municipal bond prices across the board.

in the preceding trading day. Specifically, the liquidity measure for a bond in a month t is the least squares estimate of the parameter $\pi_{i,t}$ associated with the signed volume in the following regression:¹⁶

$$r_{i,j+1,t}^e = \rho_0 + \rho_1 r_{i,j,t} + \pi_{i,t} \text{sign}(r_{i,j,t}^e) \cdot \text{Vol}_{i,j,t} + u_{i,j+1,t} \quad (15)$$

where $r_{i,j,t}^e = r_{i,j,t} - r_{b,j,t}$ is the return of municipal bond i on day j , $r_{i,j,t}$, in excess of the equally weighted municipal market return, $r_{b,j,t}$; $\text{sign}(r_{i,j,t}^e)$ is the signed indicator which is equal to 1 if $r_{i,j,t}^e$ is positive, and -1 if it is negative; and $\text{Vol}_{i,j,t}$ is the dollar volume (in ten-thousand dollars) for bond i .¹⁷ In this model, the order flow is measured by volume signed by the contemporaneous excess return on a particular municipal security. The order flow is expected to be followed by a return reversal if the municipal security is not perfectly liquid. Presumably, the greater the expected reversal for a given dollar volume, the lower the liquidity of the municipal security; that is, $\pi_{i,t}$ is negative. The model in (15) is estimated for individual bonds each month t using daily return and volume data. In empirical investigation, in order to obtain a reliable estimate of π , we select in each month only those bonds which have more than 10 observations.

The liquidity measure of each individual bond is then aggregated over all municipal bonds (N) in the sample month by month:

$$\hat{\pi}_t = \frac{1}{N} \sum_{i=1}^N \pi_{i,t} \quad (16)$$

Systematic liquidity risk, β_L , is measured as the sensitivity of bond returns to unexpected innovations in market-wide liquidity. To obtain the unexpected liquidity innovations

¹⁶ For the detail of the derivation, see Pastor and Stambaugh (2003).

(\hat{e}_t), we estimate the following autoregressive model for the differenced liquidity measure:

$$\Delta\hat{\pi}_t = a_0 + a_1\Delta\hat{\pi}_{t-1} + a_2\hat{\pi}_{t-1} + e_t \quad (17)$$

The above regression is essentially a second-order autoregression in the level series of market-wide liquidity.¹⁸ Since the residual term for municipal bond liquidity is typically quite small, we multiply the estimated \hat{e}_t by 100:

$$L_t = 100 \cdot \hat{e}_t \quad (18)$$

After constructing the market-wide liquidity measure, we include it as a state factor for the municipal bond yield model to estimate the liquidity risk premium of municipal bonds.

B. Estimation Procedure

The municipal yield model in (14) can be estimated by the nonlinear regression method. Since municipal bond yields are serially correlated, we correct the effect of autocorrelation. The first step in empirical investigation is to abstract the liquidity measure from (15) and (17). The model in (15) is particularly suitable for our investigation of municipal market liquidity because it requires only the excess return and dollar volume data. These data are readily available from the transaction records provided by Municipal Securities Rulemaking Board (MSRB). As noted, to construct a meaningful liquidity index, we impose the restriction of a minimal number of 10 transactions each month for an individual municipal security. Although municipals are traded less frequently, this presents little difficulty because the MSRB database contains

¹⁷ Pastor and Stambaugh (2003) find that this specification works better than other specifications with excess lagged returns.

¹⁸ Pastor and Stambaugh (2003) show that this time-series model captures liquidity innovations rather well.

records for more than one million municipal securities. This large database grants us a considerable leeway to choose a suitable sample to estimate market-wide liquidity. After imposing the constraint of the minimal number of transactions per month, we still have 149,666 bonds that meet this criterion. This sample size is large enough to represent the overall municipal market. Note that this particular sample is selected mainly for estimation of the market-wide liquidity factor. For the estimation of the municipal yield model in (14), we impose different criteria to better control the data sample as explained later in the data section.

In the second step, we form the portfolios of muni bonds by rating and maturity. There are advantages of estimating the yield model with portfolios. First, forming portfolios allows us to construct more regular time series of municipal yields for regression estimation, to overcome the problem of infrequent trading. Second, portfolio formation reduces data noise associated with individual bonds due to recording errors and stale prices. Because the portfolios are grouped by rating and maturity, we retain control on these two important bond characteristics. We calculate the yield for each portfolio from our data sample month by month. We then estimate the nonlinear model in (14) using monthly yield data of each portfolio using the Gauss-Newton method.

III. Data Description

We use the municipal bond database provided by the Municipal Securities Rulemaking Board in our empirical estimation. The MSRB is the self-regulatory agency established by Congress, which develops rules subject to SEC approval to govern the conduct of brokers and dealers involved in underwriting and trading municipal securities. Approximately 2,700 municipal securities brokers and dealers are registered with the

MSRB. Since 1997, the municipal bond industry has operated under a mandatory transaction reporting system overseen by the MSRB. All dealer-to-dealer and dealer-to-customer muni bond transactions are reported to the MSRB after the close of business each day. The MSRB then consolidates the daily reports. Beginning in July 2000, the MSRB started releasing electronic files containing all municipal bond transaction data two weeks after actual transactions took place.¹⁹ The MSRB transaction reports contain data fields including CUSIP, security description, issue date, coupon, maturity date, trade date, time of trade, par amount of trade, transaction price, and yield. Useful features of the data include whether a transaction is sale to customer, purchase from customer or inter-dealer trade, and an indicator showing whether the trade occurs before the syndicate settlement date.

Additional information on the characteristics of each bond are collected from Bloomberg, which includes the rating of a bond when it was issued, the issue size and type (e.g., general obligation or revenue bonds), whether the bond is callable or contains a sinking fund provision, and whether the bond is insured. Zero-coupon Treasury yields are obtained from the Federal Reserve Board (FRB), where spot rates are estimated from Treasury prices using the Svensson method (see Bolder and Streliski, 1999, for details).

The sample period is from July 2000 to June 2004. The initial sample contains a total of 1,056,774 bonds, 27,330,633 transactions and dollar volume of 11.7 trillion. A notable feature of the municipal market is that most bonds are not frequently traded. Compared to the Treasury market, the trading volume on the municipal bond market is

¹⁹ The initial lag was one month, but the MSRB has since sequentially reduced the lag time to two weeks, one week and one day. Beginning January, 2005, the lag was substantially reduced as the MSRB and the Bond Market Association (BMA) partnered to make transaction data available within fifteen minutes of a trade.

much smaller. For example, in June 2004, the average weekly volume (total par value traded) on the municipal market is 89.68 billion, while the average weekly Treasury transaction is 756.21 billion, according to New York Fed's weekly survey on primary Treasury dealers conducted each Wednesday. Infrequent trading is a key factor contributing to low liquidity in this market.

To construct the data sample for our empirical estimation of the municipal yield model in (14), we match the raw MSRB data with bond characteristic information from Bloomberg and impose the following screening criteria.²⁰ We first drop trades that occur on or before the underwriting syndicate settlement date, and keep only secondary market trades. This filter reduces the number of bonds to 805,510 and the number of transactions to 22,967,938. We then eliminate bonds with unknown credit ratings, leaving 686,859 bonds and 21,554,555 trades in the sample. Since our municipal model holds for straight bonds, we delete bonds with embedded option features (i.e., bonds with call and sinking fund provisions). Due to the fact that the majority of municipal bonds are callable, this filter decreases the sample substantially to 114,626 bonds and 2,149,008 trades. We also eliminate bonds that carry variable rates or irregular coupons. This restriction removes 185 bonds and 2,500 transactions. To focus on bonds that are relatively frequently traded in order to construct the portfolios with enough observations, we keep only those transactions that are within one year from the issuance date. This step excludes 61,371 bonds and leaves 53,070 bonds and 883,753 transactions in the sample. In addition, we throw away transactions with obvious errors in prices or with missing prices. This filter drops 207 bonds and 7,541 trades. Finally, for a similar concern about liquidity, we

exclude those bonds that are less than six months away from maturity. Our final sample contains 48,278 bonds with a total of 753,268 secondary market transactions.

We group the individual bond data according to their ratings and maturities. Because there are very few speculative bonds in our data sample, we include only bonds in the following rating classes: AAA, AA/A and BBB. In the original database, AA and A bonds are grouped together and so we keep them in one group. There are very few trade and transaction price data for bonds with long maturity. We therefore lump (equally weighted) all bonds with maturities from 18 to 22 years to form long-term portfolios. This enables us to assemble a larger number of observations in portfolios to examine the empirical properties of long-term municipals. The average maturity for these long-term portfolios is very close to 20 years: 19.9 years for AAA, 19.5 years for AA/A and 19.9 years for BBB bonds.²¹ For convenience, these portfolios are placed under the 20-year category for the corresponding rating class.

Table I provides the summary statistics for the three rating groups of municipals, and Treasuries by maturity. Panel A shows that yields of AAA bonds are lower than those of AA/A bonds which, in turn, are lower than those of BBB bonds. Yields of Treasury bonds with the same maturity are generally greater than those of AAA and AA/A bonds. However, Treasury yields may be lower than BBB yields, indicating that the default and liquidity premia may outweigh the tax-exempt advantage for bonds in this rating class. Figure 1 plots the time-series of municipal and Treasury yields for maturities from one to ten years.

²⁰ As noted earlier, this sample selection procedure applies to our yield model estimation. For the construction of the liquidity index, we impose a less stringent restriction that only requires a minimum of 10 transactions per month for each individual bond.

Panel B of Table I shows monthly averages of the number of transactions, trading volume (in par amount), and the number of bonds for each rating-maturity portfolio. For each month we calculate the number of bonds and transactions, and total par volume for each portfolio and then average them over all months in the entire sample period. As shown, the AA/A bonds have the largest number of transactions, volume and number of bonds for most maturity groups, followed by AAA and BBB bonds. In terms of the number of transactions, the five-year maturity bonds are highest whereas bonds in the 20-year maturity group are lowest.

Panel A of Table II summarizes the yield spreads between Treasuries and AAA bonds, between AAA and AA/A bonds and between AA/A and BBB bonds. Average differences between Treasury and AAA yields are around 70 basis points. Average yield differences between AA/A and AAA bonds, and between BBB and AA/A are about 10 and 50 basis points, respectively. The term structure of the yield spread between Treasuries and AAA bonds exhibits a hump shape. The spread declines beyond the five-year maturity, which confirms the previous finding that prime municipal bond yields rise relative to Treasury yields when maturity gets longer (see Green, 1993).

Panel B reports term premiums for Treasuries and municipals. The term premium is obtained by subtracting from the yield for a given maturity the corresponding yield of one-year maturity. Consistent with previous findings, average yields for Treasuries increase less rapidly with maturity than do those of municipals. However, average term premiums are only higher for the 20-year municipal group relative to Treasury bonds. This is somewhat different from previous findings, suggesting that the relative steepness

²¹ The shape of the yield curve between 18 and 22 years is close to linear and so an equally weighted average yield is very close to the average yield of 20-year bond.

of the yield curves may vary by sample periods. By contrast, average term premiums for AAA municipals are higher than those for BBB municipals at all maturities. The columns reporting the minimum values of the term premium show negative numbers for Treasuries at all maturities whereas they are all positive for municipals. Results show that while the yield curves of Treasuries may revert, this phenomenon has never occurred for municipal bonds.

IV. Empirical Results

A. Estimation of the Municipal Yield Model

We next estimate the municipal yield model using the monthly yield series for each maturity-rating group. Estimating the municipal bond yield model requires spot rates of pure discount bonds. The pretax discount factor P_t embedded in the after-tax discount factor d_t at time t is the inverse of one plus the spot rate of a pure discount bond to the power of t . We can express the after-tax discount factor d_t as a function of the pretax discount factor P_t and the marginal income tax rate. By substituting the definition of the after-tax discount factor $d_t = P_t / (1 - \tau(1 - P_t))$ into the model and using the spot rate data obtained from the FRB, we can directly estimate the marginal income tax rate and default probability from the observed municipal and Treasury bond yields. The nonlinear municipal yield model is estimated for bond groups with different ratings and maturities.

In addition to spot rates, we need to construct the aggregate municipal bond market liquidity index before estimating the yield model. We estimate liquidity measures for individual bonds each month using the regression model in (15) and aggregate them over all bonds to obtain the monthly series of the municipal market liquidity index.

Panel A of Figure 2 plots the estimates of the aggregate liquidity index for the muni market. By construction, negative liquidity index values imply positive liquidity costs. The aggregate liquidity measure shows occasional downward spikes. The largest downward spike occurs in September 2001 when the market was shut down due to the terrorist attack at the New York World Trade Center. The second largest spike occurs in the fall of 2002 when the market was jittered by the episode of WorldCom. The third largest spike occurs around July 2001 when the Enron scandal began to unravel. Another major downward spike occurs after the announcement of the tax cut by the Bush Administration on May 23, 2003, which triggers a sell-off in the municipal bond market as the tax-exempt advantage of municipals is eroded.²² Overall, the aggregate liquidity measure constructed from the Pastor-Stambaugh method appears to pick up significant events quite effectively.

The median value of the aggregate liquidity measure is -2.37%. Excluding the extreme value of September 2001, the mean liquidity index is -3.66%. These numbers suggest that the average liquidity cost is around 2.4% to 3.7%, which represents the cost for a \$10 thousand trade in constant “municipal bond market” dollars of year 2000. The correlation between the liquidity measure and the aggregate municipal bond market return is 0.05, indicating that the liquidity cost is somewhat lower when the market performance is better.

²² According to the tax bill passed May 23, 2003, the highest income tax rate for individuals is reduced to 35% retroactive to January 1, 2003. The next three rates are 33%, 28% and 25%. This tax act accelerates the tax reduction scheduled for 2004 through 2006 by the Economic Growth and Tax Relief Reconciliation Act of 2001. The new tax law also increases the taxable income level for the 10% bracket. Other effects of the 2003 tax act include child tax credit, marriage tax breaks, alternative minimum tax, business bonus depreciation and small-business spending (see the report of the Wall Street Journal May 23, 2003).

Panel B of Figure 2 plots the innovations of the liquidity measure. The innovation series appears to be serially independent. The autocorrelation of innovations of the liquidity measure is -0.114, which is relatively small. We employ this innovation series in the nonlinear regression model to capture the effects of unanticipated liquidity shocks on yields of municipal bonds.

Table III reports the estimates of the generalized municipal bond model with liquidity risk.²³ Parameter estimates for tax rate and default probability are expressed in percentage terms, and standard errors are reported in parentheses. The estimates of the liquidity risk parameter are very significant and of a negative sign. Since the liquidity measure L also has a negative sign, the negative coefficient of the liquidity factor translates into a positive effect on municipal bond yields. The sensitivity of municipal bond yields to the liquidity factor increases significantly with maturity, suggesting a much higher liquidity risk for longer-term bonds. For example, the liquidity risk coefficient in absolute value for 10-year bonds is more than three times that of one-year bonds for each rating class. This difference is even more striking for the 20-year bond group. Moreover, the sensitivity of yields to liquidity increases as credit risk increases, indicating that lower quality bonds have higher liquidity risk. This result lends support to the contention of a positive correlation between credit and liquidity risk.

The estimates of marginal income tax rate and default parameter are all highly significant. The estimated marginal tax rates are around 32 to 33 percent. Two interesting patterns are observed. First, the estimates of implicit tax rates are very close to the maximum statutory income tax brackets of high-income individuals and

²³ The recovery rate is set equal to 0.4 whose value is very close to that used by Duffee (1999) and Elton et al. (2001).

corporations. Second, these implicit tax rate estimates are very stable over maturities. These findings contrast sharply with previous findings that the implicit tax rates are substantially below the statutory tax rates of high-income individuals and corporations, and that the estimates of the implicit tax rate declines drastically with maturity. In some studies, the estimated implicit income tax rates for municipal bonds with maturity longer than 20 years are merely half of that for one-year municipal bonds.²⁴ By contrast, our empirical estimates do not exhibit these anomalies in the implicit income tax rates. Results suggest that the so-called municipal yield puzzle may well be attributable to missing factors in the traditional models.

The estimates of default probabilities are consistent with ratings. These estimates are annualized default probabilities. The implied default probabilities are in line with previous estimates.²⁵ Given maturity, estimated default probabilities increase monotonically as the rating decreases. Within each rating class, the default probability estimates exhibit an upward trend with maturity. The upward-sloping term structure of the default probability is consistent with empirical evidence on investment-grade bonds.

Overall, the model with liquidity risk explains the relative yield curves of municipal bonds very well. The goodness-of-fit in terms of high R^2 is quite good across all ratings and maturities. The results suggest that personal taxes, liquidity and default risk are important determinants of municipal bond yields.

B. Decomposition of Municipal Bond Yields

The results above show significant effects of liquidity risk on municipal bonds of different ratings and maturities. A question of particular interest is how much municipal

²⁴ See Table 3 in Green (1993, p. 239).

²⁵ See, for example, Yawitz et al. (1985).

bond yield can be attributed to liquidity risk. The yield model allows us to separate the effect of liquidity risk from the combined effect of personal taxes, default risk and riskfree (Treasury) rates, which is nonlinear in nature due to the interactive effects among these variables. We first employ the parameter estimates of default probability, tax rates and liquidity risk to calculate the municipal bond yields. We then separate these municipal bond yield estimates into the liquidity and non-liquidity components.

Table IV reports the results of yield decomposition, where the estimate of each spread component is expressed in magnitude (%) and in the proportion of the observed yield (% yield) for each yield component. We report the yield components for each rating and maturity group. In addition, both observed yields and total yield estimate (the sum of liquidity and non-liquidity components) are reported in the leading column of each rating class.

The liquidity component of municipal yields increases with maturity and credit risk in terms of both the magnitude and proportion of observed yields. The liquidity spread in basis points increases from 14 to 65 for AAA bonds as maturity rises from one to 20 years. Correspondingly, the liquidity spread in the proportion of the observed yield increases from 7 to 13 percent. For AA/A bonds, the liquidity spread increases from 16 to 79 bps, which accounts for about 7 to 16 percent of the observed yields of different maturities. For BBB bonds, it increases from 23 to 111 bps, or about 8 to 20 percent of the observed yield. The results show that the amount of liquidity premium is sizable for most bonds and it is particularly large for lower-quality long-term municipal bonds.

The non-liquidity yield component (including effects of taxes, default and risk-free rates) also increases with maturity and credit risk. This increase is associated more

with the change in default risk than with taxes since the estimates of marginal tax rates are not materially different over maturities and across ratings. As maturity increases, the probability of default increases for these investment-grade municipal bonds. Similarly, as the rating decreases, default probability increases. Since the default probability has a positive effect on municipal yield, this increase in default probability contributes to the increase in the non-liquidity yield component.

However, the non-liquidity yield component in percentage terms declines over maturities. Although the non-liquidity yield component increases in magnitude with maturity, observed yields appear to increase faster, due to an increase in liquidity risk as maturity gets longer. As a result, the proportion of the non-liquidity component to the observed spread declines with maturity. By contrast, the proportion of the liquidity component to the observed spread increases with maturity.

This finding suggests that liquidity risk is a more important factor contributing to the rising maturity premium of municipals relative to Treasuries. The liquidity premium accounts for a substantial portion of the maturity premium. For example, as shown in Panel B of Table II, the maturity premium for AAA bonds is 34 bps for two-year bonds and 298 bps for 20-year bonds, a difference of 264 bps. In contrast, the corresponding maturity premium for Treasuries increases from 41 to 277, a 236 bps difference. It appears that the maturity premium increases faster for long-maturity municipal bonds. But if we adjust the maturity premium of 20-year municipals by the incremental liquidity premium of 48 bps (65-17 bps), we come up with an adjusted maturity premium of only 216 bps, which is lower than the corresponding maturity premium increase of

Treasuries.²⁶ Thus, it seems that liquidity risk is the driving force behind the high yields of municipals relative to Treasuries at long maturity. Chalmers (1998) finds that differential default risk alone cannot explain the municipal yield puzzle. Our results are consistent with this view.

C. Likelihood Ratio Tests

We next conduct the likelihood ratio test to see if liquidity risk adds significant explanatory power to the municipal bond model. It is straightforward to perform the likelihood ratio test on the incremental explanatory power of liquidity risk. The test statistic is

$$LR = \frac{(SSR^C - SSR^U) / k}{SSR^U / (n - K)} \quad (19)$$

where SSR^C is the sum of the squared residuals of the constrained model, which imposes the condition that $\beta_L = 0$, SSR^U is the sum of the squared residuals of the unconstrained (full) model, $K (= 3)$ is the number of explanatory variables, $k (= 1)$ is the number of coefficients restricted to be zero, and $n (= 48)$ is the number of observations. The test statistic LR of the nonlinear yield model follows an F distribution with $(k, n-K)$ degrees of freedom if the disturbance term is normal under the null hypothesis that the restricted coefficients are zero (see Gallant, 1987).²⁷

Table V reports the results of likelihood ratio tests. The critical F value is 4.0 at the five percent level. Results show that likelihood ratio tests reject the null hypothesis of $\beta_L = 0$ for all maturity-rating groups. Consistent with the t-tests in Table III, results show that liquidity risk adds significant explanatory power to the municipal model.

²⁶ This calculation assumes that Treasury bond's liquidity risk is negligible and so it may overstate the effect of municipal liquidity risk. However, the qualitative effect of municipal liquidity risk holds true.

Thus, the effect of liquidity risk should be incorporated into the model in order to better explain the behavior of the relative municipal-Treasury yield curves.

D. Liquidity and Bond Characteristics

Previous studies have shown that liquidity may vary with securities with different characteristics and trading activities such as coupon, issuance size, volume, and frequency of trades. In this section, we examine whether bonds with certain traditional liquidity characteristics tend to have different liquidity spreads.

We first rank individual municipals month-by-month based on coupon rate, size of the bond issue, volume, and trading frequency and sort them into three portfolios: high, medium and low. We then calculate average coupon rate, issue size, frequency of trades and yield each month over all bonds in each portfolio. For volume, we sum all trades each month for each individual bond and then take an average over all bonds in a portfolio.

Table VI reports averages of coupon rate, issue size, volume and frequency of trades per bond in the high and low portfolios. These are mean statistics calculated over all months. Coupon rates range from 2.15 to 6.17 percent. The average number of trades for an individual bond per month is no more than two for the low-frequency portfolios across ratings. For high-frequency portfolios, the number of trades for an individual bond per month ranges from 7 to 13 for AAA and AA/A bonds, and 5 to 33 for BBB bonds. The difference in the size of issues between the high and low groups is greater for BBB bonds, whereas the difference in volume is greater for shorter-maturity higher-grade bonds.

²⁷ This statement holds true for the nonlinear model.

Table VII reports yields for high and low portfolios averaged over all months. Yields are lower for municipals with larger issuance size, and higher volume and trading frequency. By contrast, there is no clear pattern of yields for bonds with different coupon rates. The difference in the yields for bonds with different issuance size, volume and trade frequency may reflect varying liquidity risk in these bond groups. In addition to trade frequency and volume, we also examine the pattern of trade size and its effects on bond yields. Consistent with the finding of Downing and Zhang (2004), volume and trade size contain very similar information. Since the yield patterns for the portfolios ranked by volume and trade size are quite similar, we skip the results for trade size for brevity.²⁸

We next estimate the municipal yield model for the high and low portfolios ranked in terms of these characteristics. Since the estimates of default probability and marginal income tax rates are similar to those in Table III, we only report estimates of liquidity risk parameters for the interest of brevity. Table VIII reports estimates of the liquidity risk parameter for different rating classes and maturities. All parameter estimates are significant at least at the five percent level.

The results show that the liquidity beta (β_L) is lower in absolute value for bonds with high issuance size and volume. This pattern is consistent across ratings. A similar pattern is found for the groups with high and low frequency of trades. Although liquidity beta also tends to be lower for high-coupon portfolios, the relationship is somewhat weaker. In general, the size of liquidity beta increases as rating decreases and maturity increases.

²⁸ These results are available upon request.

We next estimate the yields for each portfolio and decompose them into liquidity and non-liquidity components. Table IX reports the liquidity spreads for each characteristic portfolio both in percentage (%) and proportion of the observed spread (% yield). The results show that the liquidity spread is lower when issue size, trading volume and frequency of trades are higher. The difference in liquidity spreads between high and low portfolios tends to increase with maturity and credit risk. On average, the differences in the liquidity risk premiums between the portfolios of high- and low-issue size are 9 bps (2.3%) for AAA bonds, 17 bps (4.5%) for AA/A bonds and 23 bps (5.1%) for BBB bonds. The differences between high- and low-volume portfolios are 9 bps (2.1%), 15 bps (3.8%) and 20 bps (4.4%), for AAA, AA/A and BBB bonds, respectively. The differences between high and low frequency of trades are 4 bps (0.6%), 16 bps (4.0%) and 4 bps (0.5%) for the three rating groups, respectively. For the coupon portfolios, we also find that higher coupon bonds tend to have lower liquidity spreads for AA/A and BBB bonds. The differences in the liquidity spreads between high- and low-coupon portfolios are 5 bps (1.3%) and 6 bps (2.6%), for these two rating groups. However, there is no clear pattern for the spread differences in high- and low-coupon groups over maturities for AAA bonds and the average liquidity spreads are quite close for these two groups.

In summary, liquidity risk of municipal bonds is highly correlated with traditional liquidity variables. When municipal bonds are sorted into high and low portfolios based on trading activity and bond characteristics, we find substantial differences in liquidity spreads. In general, those municipals with higher volume and trade frequency, and larger issue size have lower liquidity risk and liquidity spreads. The results suggest that the

aggregate liquidity measure and estimated sensitivities to market-wide liquidity capture the liquidity features of municipal bonds very well. Investors require higher yields for bonds with higher liquidity risk and the size of this liquidity spread is of economic significance.

V. Conclusions

Previous studies have been unable to explain the municipal puzzle associated with long-term yields. Green (1993) suggests that dealer arbitrage activities in the market for Treasury bonds substantially reduce the impact of taxes on long-maturity taxable bond prices and therefore reduce yields of taxable bonds relative to yields of tax-exempt bonds. Although his study shows that this arbitrage factor had explanatory power for the spread between long-term municipal bonds and Treasuries, a substantial portion of the long-term municipal spread was still left unexplained. A possible reason is that the effects of default and liquidity risk were left out.

In this paper, we propose a generalized model that incorporates the effects of liquidity, default risk and personal taxes on municipal bond yields. The model explains the yields of municipal bonds relative to those of Treasury bonds very well. We find that long-term municipal bond yields are higher than the equivalent after-tax Treasury yields largely because both liquidity risk and default risk are higher. On the other hand, the tax effect appears to be quite stable over maturities.

Empirical evidence shows that liquidity risk is an important determinant of municipal bond yields. A substantial portion of municipal bond yields is attributable to liquidity risk. The sensitivity of municipal yields to market-wide liquidity increases monotonically with credit risk and maturity. Liquidity premiums are higher for bonds

with lower ratings. More importantly, the liquidity premium in percentage of observed municipal yields increases over maturities, which contributes significantly to the high yields of long-term municipal bonds relative to Treasuries. For AAA municipals, the liquidity premium increases from 7 to 13 percent of the observed yield, or from 14 to 65 basis points as bond maturity increases from one to 20 years. The gap is even wider for BBB bonds, which increases from 8 to 20 percent of the observed yield, or from 23 to 111 basis points. Thus, a substantial portion of the maturity premium for long-term municipal bonds is due to the liquidity premium.

In addition, default risk significantly affects yields of municipal bonds. The effect of default risk is stronger for lower-quality and longer-maturity bonds. This default effect partially explains why yields of municipal bonds tend to be high relative to yields of Treasuries of equal maturity, especially for long-maturity bonds.

Consistent with previous findings, personal taxes are an important determinant of the relative municipal yield. Unlike past studies, our estimates of implicit tax rates are very close to the maximum statutory income tax rates of high-income individuals and corporations. Furthermore, these implicit tax rate estimates are remarkably stable over maturities. The anomalies of declining implicit income tax rates over maturities documented in previous studies disappear after we control for the effects of liquidity and default risk.

Finally, when we further sort municipal bonds into portfolios based on the traditional variables of liquidity, we find that liquidity spreads estimated from the yield model are highly correlated with these variables. Thus, the model appears to capture the liquidity risk of municipal bonds quite well. Our findings suggest that liquidity risk

should be accounted for in order to explain more satisfactorily the relative yields of tax-exempt and taxable bonds.

References

- Amihud, Y., 2002, Illiquidity and stock returns: Cross-section and time-series effects, *Journal of Financial Markets* 5, 31-56.
- Amihud, Y., and H. Mendelson, 1986, Asset pricing and the bid-ask spread, *Journal of Financial Economics* 17, 223-249.
- Amihud, Y. and H. Mendelson, 1991, Liquidity, maturity, and yields on U.S. Treasury securities, *Journal of Finance* 46, 1411-1425.
- Ang, J., D. Peterson and P. Peterson, 1985, Marginal tax rates: Evidence from nontaxable corporate bonds: A note, *Journal of Finance* 40, 327-332.
- Bolder, D. and D. Streliski, 1999, Yield curve modeling at the Bank of Canada, technical paper, Bank of Canada.
- Brennan, M. J., T. Chordia and A. Subrahmanyam, 1998, Alternative factor specifications, security characteristics, and the cross-section of expected stock returns, *Journal of Financial Economics* 49, 345-373.
- Brennan, M. J. and A. Subrahmanyam, 1996, Market microstructure and asset pricing: On the compensation for illiquidity in stock returns, *Journal of Financial Economics* 41, 441-464.
- Constantinides, G. M. and J. E. Ingersoll, Jr., 1984, Optimal bond trading with personal taxes, *Journal of Financial Economics* 13, 299-335.
- Chalmers, J. M. R., 1995, The relative yields of tax-exempt and taxable bonds: Evidence from municipal bonds that are secured by U.S. government obligations, Ph.D. dissertation, University of Rochester.
- Chalmers, J. M. R., 1998, Default risk cannot explain the muni puzzle: Evidence from municipal bonds that are secured by U.S. Treasury obligations, *Review of Financial Studies* 11, 281-308.
- Downing, C. and F. Zhang, 2004, Trading activity and price volatility in the municipal bond market, *Journal of Finance* 59, 899-931.
- Duffee, G., 1999, Estimating the price of default risk, *Review of Financial Studies*, 12, 197-226.
- Duffie, D. and K. Singleton, 1999, Modeling term structures of defaultable bonds, *Review of Financial Studies* 12, 687-720.
- Elton, J. E., M. J. Gruber, D. Agrawal and C. Mann, 2001, Explaining the rate spread on corporate bonds, *Journal of Finance* 56, 247-277.
- Fabozzi, F., 1997, *The Handbook of Fixed Income Securities*, 5th edition, McGraw Hill.

- Fama, E. F., 1977, A pricing model for the municipal bond market, working paper, University of Chicago.
- Fortune, P., 1973, The impact of taxable municipal bonds: policy simulations with a large econometric model, *National Tax Journal* 26, 3-31.
- Gallant, A. R., 1987, *Nonlinear Statistical Models* (John Wiley & Sons, New York).
- Galper, H. and J. Peterson, 1971, An analysis of subsidy plans to support state and local borrowing, *National Tax Journal* 24, 344-67.
- Gordon, R. H. and B. G. Malkiel, 1981, Corporate finance, in H. J. Aaron and J. A. Pechman (ed.), *How Taxes Affect Economic Behavior*, Brookings Institution, Washington, DC.
- Green, R. C., 1993, A simple model of the taxable and tax-exempt yield curves, *Review of Financial Studies* 6, 233-264.
- Green, R. C. and B. A. Odegaard, 1997, Are there tax effects in the relative pricing of U.S. government bonds, *Journal of Finance* 52, 609-633.
- Harris, L. E. and M. S. Piwowar, 2004, Municipal bond liquidity, working paper, Securities and Exchange Commission.
- Hempel, G., 1972, An evaluation of municipal bankruptcy laws and proceedings, *Journal of Finance* 27, 1012-1029.
- Huang, J.-Z., and M. Huang, 2003, How much of the corporate-Treasury yield spread is due to credit risk?, working paper, Penn State University and Stanford University.
- Jarrow, R. A. and S. M. Turnbull, 1995, Pricing derivatives on financial securities subject to credit risk, *Journal of Finance* 50, 53-85.
- Jordan, B. and S. D. Jordan, 1990, Tax-timing options and the relative yields on municipal and taxable bonds, working paper, University of Missouri-Columbia.
- Kidwell, D. S. and T. W. Koch, 1983, Market segmentation and the term structure of municipal yields, *Journal of Money, Credit and Banking* 18, 482-494.
- Kim, J., K. Ramaswamy and S. Sundaresan, 1993, Does default risk in coupons affect the valuation of corporate bonds?: A contingent claims model, *Financial Management* 22, 117-131.
- Kimbal, R., 1977, Commercial banks, tax-avoidance and the market for state and local debt, *New England Economics Review*, January/February, 80-97.
- Litvack, D. and F. Rizzo, 1999, Municipal default risk, *Public Finance Special Report*, Fitch IBCA.

- Liu, S. X., J. Wang and C. Wu, 2003, Effects of credit quality on the relation between tax-exempt and taxable yields, *Journal of Fixed Income* 13, 80-99.
- Longstaff, F. A., S. Mithal and E. Neis, 2005, Corporate yield spreads: Default risk or liquidity? New evidence from the credit-default swap market, *Journal of Finance*, forthcoming.
- Miller, M., 1977, Debt and taxes, *Journal of Finance* 32, 261-275.
- Mussa, M. L. and R. C. Kormendi, 1979, *The Taxation of Municipal Bonds*, American Enterprise Institute, Washington DC.
- Pastor, L. and R. F. Stambaugh, 2003, Liquidity risk and expected stock returns, *Journal of Political Economy* 111, 642-685.
- Poterba, J. M., 1986, Explaining the yield spread between taxable and tax-exempt bonds, in H. Rosen (ed.), *Studies in State and Local Public Finance*, University of Chicago Press, Chicago.
- Poterba, J. M., 1989, Tax reform and market for tax-exempt debt, *Regional Science and Urban Economics* 19, 537-562.
- Scholes, M. S. and M. A. Wolfson, 1992, *Taxes and Business Strategy: A Planning Approach*, Prentice-Hall, Englewood Cliffs, NJ.
- Skelton, J. L., 1983, Relative risk in municipal and corporate debt, *Journal of Finance* 38, 625-634.
- Stock, D., 1994, Term structure effects on default risk premia and the relationship of default-risky tax-exempt yields to risk-free taxable yields: A note, *Journal of Banking and Finance* 18, 1185-1203.
- Trzcinka, C., 1982, The pricing of tax-exempt bonds and the Miller hypothesis, *Journal of Finance* 37, 907-923.
- Wu, C., 1991, A certainty equivalent approach to municipal bond default risk estimation, *Journal of Financial Research* 14, 241-247.
- Wu, C. and C. H. Yu, 1996, Risk aversion and the yield of corporate debt, *Journal of Banking and Finance* 20, 267-281.
- Yawitz, J. B., K. J. Maloney and L. H. Ederington, 1985, Taxes, default risk, and yield spreads, *Journal of Finance* 40, 1127-1140.
- Zimmerman, J., 1977, The municipal accounting maze: An analysis of political incentives, *Journal of Accounting Research*, supplement, 107-144.

Table I
Descriptive Statistics

Panel A of this table reports the mean and standard deviation of yields for the 21 portfolios formed by rating (AAA, AA/A, BBB) and maturity (1-, 2-, 3-, 5-, 7-, 10-, and 20-year) as well as the Treasury yields of corresponding maturity. We calculate the yield of each portfolio month by month and then report mean and standard deviation of these monthly yield series. Panel B reports the monthly average of the number of transactions, par amount traded, and the number of bonds for municipal bond portfolios grouped by ratings and maturity. The sample period is from July 2000 to June 2004. Data sources: the Federal Reserve Board, Bloomberg and the MSRB.

Panel A. Yields of Treasuries and Municipals

| Maturity | Mean | | | | Standard Deviation | | | |
|----------|----------|------------|------|------|--------------------|------------|------|------|
| | Treasury | Municipals | | | Treasury | Municipals | | |
| | | AAA | AA/A | BBB | | AAA | AA/A | BBB |
| 1 | 2.62 | 2.04 | 2.23 | 2.76 | 1.63 | 1.05 | 1.09 | 1.08 |
| 2 | 3.03 | 2.38 | 2.47 | 2.99 | 1.47 | 1.04 | 1.03 | 0.97 |
| 3 | 3.38 | 2.67 | 2.75 | 3.26 | 1.31 | 0.95 | 0.92 | 0.85 |
| 5 | 3.98 | 3.21 | 3.27 | 3.78 | 1.02 | 0.75 | 0.71 | 0.56 |
| 7 | 4.39 | 3.65 | 3.70 | 4.28 | 0.86 | 0.58 | 0.54 | 0.39 |
| 10 | 4.67 | 3.96 | 4.02 | 4.54 | 0.66 | 0.48 | 0.44 | 0.31 |
| 20 | 5.39 | 5.02 | 5.11 | 5.57 | 0.44 | 0.24 | 0.33 | 0.31 |

Panel B. Trading Characteristics of Municipal Bond Portfolios

| Maturity | Number of Transactions (per month) | Par Volume (million) | Number of Bonds |
|----------|------------------------------------|----------------------|-----------------|
| AAA | | | |
| 1 | 860.88 | 1632.79 | 270 |
| 2 | 710.58 | 305.63 | 249 |
| 3 | 686.83 | 214.36 | 231 |
| 5 | 1389.31 | 293.65 | 415 |
| 7 | 1235.77 | 259.39 | 335 |
| 10 | 1153.60 | 277.05 | 263 |
| 20 | 264.29 | 109.23 | 73 |
| AA/A | | | |
| 1 | 2714.81 | 906.67 | 918 |
| 2 | 2667.77 | 493.15 | 919 |
| 3 | 2548.71 | 467.06 | 821 |
| 5 | 4673.90 | 908.80 | 1335 |
| 7 | 3527.35 | 622.72 | 941 |
| 10 | 2839.83 | 619.86 | 647 |
| 20 | 277.96 | 129.37 | 55 |
| BBB | | | |
| 1 | 183.67 | 19.92 | 56 |
| 2 | 245.83 | 31.44 | 67 |
| 3 | 286.40 | 31.94 | 72 |
| 5 | 689.42 | 85.68 | 136 |
| 7 | 651.25 | 85.21 | 106 |
| 10 | 623.40 | 109.49 | 78 |
| 20 | 153.06 | 56.60 | 16 |

Table II
Summary Statistics for the Spreads of Municipal Bonds

All yield series are monthly and reported as annual percentages. Panel A presents the mean, minimum and maximum of the spreads of the municipal bond portfolios formed by rating and maturity. ΔTP is the yield spread between Treasury and AAA municipal bonds, ΔPG is the yield spread between AAA and AA/A municipal bonds; ΔGM is the yield spread between AA/A and BBB municipal bonds. Panel B reports the maturity spreads for each rating class. Maturity spread is calculated by subtracting from the yield for a given maturity group the corresponding yield for one-year maturity. *** represents significance at the 1% level.

Panel A. Yield Spreads between Different Bonds

| Maturity | Mean | | | Minimum | | | Maximum | | |
|----------|-------------|-------------|-------------|-------------|-------------|-------------|-------------|-------------|-------------|
| | ΔTP | ΔPG | ΔGM | ΔTP | ΔPG | ΔGM | ΔTP | ΔPG | ΔGM |
| 1 | 0.58*** | 0.19*** | 0.53*** | 0.02 | 0.01 | 0.10 | 2.11 | 0.39 | 0.99 |
| 2 | 0.66*** | 0.10*** | 0.52*** | 0.03 | -0.07 | 0.08 | 1.89 | 0.23 | 0.92 |
| 3 | 0.71*** | 0.08*** | 0.51*** | 0.08 | -0.08 | -0.02 | 1.68 | 0.19 | 0.93 |
| 5 | 0.77*** | 0.06*** | 0.51*** | 0.10 | -0.07 | 0.10 | 1.49 | 0.16 | 1.10 |
| 7 | 0.74*** | 0.06*** | 0.58*** | 0.21 | -0.06 | 0.16 | 1.41 | 0.18 | 1.27 |
| 10 | 0.71*** | 0.06*** | 0.53*** | 0.23 | -0.05 | 0.06 | 1.08 | 0.16 | 1.23 |
| 20 | 0.37*** | 0.09*** | 0.46*** | 0.01 | -0.12 | -0.07 | 0.86 | 0.16 | 0.84 |

Panel B. Maturity Spreads

| Maturity | Mean | | | | Minimum | | | | Maximum | | | |
|----------|----------|-----------|---------|---------|----------|-----------|------|------|----------|-----------|------|------|
| | Treasury | Municipal | | | Treasury | Municipal | | | Treasury | Municipal | | |
| | | AAA | AA/A | BBB | | AAA | AA/A | BBB | | AAA | AA/A | BBB |
| 2 | 0.41*** | 0.34*** | 0.24*** | 0.23*** | -0.25 | 0.10 | 0.01 | 0.00 | 0.99 | 0.75 | 0.52 | 0.71 |
| 3 | 0.76*** | 0.64*** | 0.52*** | 0.50*** | -0.34 | 0.20 | 0.00 | 0.06 | 1.57 | 1.23 | 1.03 | 1.20 |
| 5 | 1.36*** | 1.17*** | 1.03*** | 1.02*** | -0.43 | 0.29 | 0.10 | 0.08 | 2.18 | 1.79 | 1.62 | 2.01 |
| 7 | 1.77*** | 1.61*** | 1.47*** | 1.52*** | -0.32 | 0.38 | 0.20 | 0.12 | 2.65 | 2.40 | 2.26 | 2.58 |
| 10 | 2.04*** | 1.92*** | 1.78*** | 1.78*** | -0.37 | 0.49 | 0.29 | 0.28 | 3.14 | 2.86 | 2.69 | 2.90 |
| 20 | 2.77*** | 2.98*** | 2.88*** | 2.81*** | -0.16 | 1.11 | 1.42 | 1.07 | 4.08 | 4.01 | 3.92 | 3.99 |

Table III
Estimates of the Municipal Yield Model

This table reports parameter estimates of default probability, tax rate and liquidity risk for the municipal yield model in (14), $M_T = A_T + \beta_T C_t + \beta_L L$, where M_T is the yield on the municipal and C_T is the yield on the Treasury of maturity T , and L is the innovation of municipal market-wide liquidity. The sample period is from July 2000 to June 2004. All yield series are monthly. Municipal bonds are separated into three different rating categories: AAA, AA/A and BBB, and seven maturities. Standard errors are reported in parentheses. *, ** and *** represent significance at the 10%, 5% and 1% levels, respectively.

| Maturity | | AAA | | | | AA/A | | | | BBB | | | |
|----------|----------|----------|---------------------|-----------|----------------|----------|---------------------|-----------|----------------|----------|---------------------|-----------|----------------|
| | | Tax Rate | Default Probability | Liquidity | R ² | Tax Rate | Default Probability | Liquidity | R ² | Tax Rate | Default Probability | Liquidity | R ² |
| 1 | Value | 33.17*** | 0.217*** | -0.062*** | 99.68 | 32.63*** | 0.313*** | -0.071* | 99.55 | 33.06*** | 0.605*** | -0.102*** | 99.17 |
| | Std. Err | (1.53) | (0.02) | (0.02) | | (1.34) | (0.03) | (0.04) | | (3.12) | (0.05) | (0.03) | |
| 2 | Value | 32.35*** | 0.176*** | -0.075** | 99.70 | 32.59*** | 0.273*** | -0.084*** | 99.72 | 32.67*** | 0.728*** | -0.120*** | 99.18 |
| | Std. Err | (1.59) | (0.04) | (0.03) | | (1.66) | (0.04) | (0.03) | | (3.16) | (0.07) | (0.03) | |
| 3 | Value | 31.78*** | 0.181*** | -0.089** | 99.75 | 31.89*** | 0.319*** | -0.098*** | 99.76 | 32.02*** | 0.753*** | -0.155*** | 99.33 |
| | Std. Err | (1.72) | (0.03) | (0.02) | | (1.88) | (0.05) | (0.03) | | (3.47) | (0.08) | (0.04) | |
| 5 | Value | 32.61*** | 0.272*** | -0.120*** | 99.69 | 31.94*** | 0.428*** | -0.137*** | 99.84 | 32.14*** | 0.877*** | -0.195*** | 99.67 |
| | Std. Err | (2.38) | (0.07) | (0.03) | | (2.15) | (0.06) | (0.04) | | (6.24) | (0.16) | (0.04) | |
| 7 | Value | 33.46*** | 0.571*** | -0.146** | 99.89 | 32.38*** | 0.651*** | -0.160*** | 99.92 | 31.87*** | 0.921*** | -0.275*** | 99.84 |
| | Std. Err | (2.52) | (0.07) | (0.04) | | (2.71) | (0.08) | (0.04) | | (8.76) | (0.24) | (0.03) | |
| 10 | Value | 32.59*** | 0.592*** | -0.191*** | 99.88 | 32.12*** | 0.811*** | -0.217*** | 99.88 | 32.42*** | 0.977** | -0.319*** | 99.85 |
| | Std. Err | (3.72) | (0.11) | (0.06) | | (3.43) | (0.12) | (0.05) | | (11.75) | (0.36) | (0.05) | |
| 20 | Value | 33.07*** | 0.557** | -0.288*** | 99.67 | 32.77*** | 0.631*** | -0.351*** | 99.74 | 31.91*** | 1.211*** | -0.492*** | 99.87 |
| | Std. Err | (7.35) | (0.22) | (0.05) | | (6.21) | (0.18) | (0.06) | | (7.58) | (0.29) | (0.06) | |

Table IV
Components of Municipal Bond Yields

Reported below are observed yields, estimated yields, the yield component associated with tax, default and risk-free rates (non-liquidity component), and the component associated with liquidity risk for portfolios formed by ratings and maturity. The liquidity and non-liquidity components are expressed both in magnitude (in percentage) and in the proportion of the observed spread.

| Maturity | AAA | | | | | | AA/A | | | | | | BBB | | | | | |
|----------|-------|------|-------------------------|---------|---------------------|---------|-------|------|-------------------------|---------|---------------------|---------|-------|------|-------------------------|---------|---------------------|---------|
| | Yield | | Non-liquidity Component | | Liquidity Component | | Yield | | Non-liquidity Component | | Liquidity Component | | Yield | | Non-liquidity Component | | Liquidity Component | |
| | Obs. | Est. | % | % Yield | % | % Yield | Obs. | Est. | % | % Yield | % | % Yield | Obs. | Est. | % | % Yield | % | % Yield |
| 1 | 2.04 | 1.99 | 1.85 | 90.69 | 0.14 | 6.86 | 2.23 | 2.19 | 2.03 | 91.03 | 0.16 | 7.17 | 2.76 | 2.72 | 2.49 | 90.22 | 0.23 | 8.33 |
| 2 | 2.38 | 2.34 | 2.17 | 91.18 | 0.17 | 7.14 | 2.47 | 2.44 | 2.25 | 91.09 | 0.19 | 7.69 | 2.99 | 2.95 | 2.68 | 89.63 | 0.27 | 9.03 |
| 3 | 2.67 | 2.63 | 2.43 | 91.01 | 0.20 | 7.49 | 2.75 | 2.72 | 2.50 | 90.91 | 0.22 | 8.00 | 3.26 | 3.24 | 2.89 | 88.65 | 0.35 | 10.74 |
| 5 | 3.21 | 3.19 | 2.92 | 90.97 | 0.27 | 8.41 | 3.27 | 3.25 | 2.94 | 89.91 | 0.31 | 9.48 | 3.78 | 3.76 | 3.32 | 87.83 | 0.44 | 11.64 |
| 7 | 3.65 | 3.63 | 3.30 | 90.41 | 0.33 | 9.04 | 3.70 | 3.69 | 3.33 | 90.00 | 0.36 | 9.73 | 4.28 | 4.26 | 3.64 | 85.05 | 0.62 | 14.49 |
| 10 | 3.96 | 3.95 | 3.52 | 88.89 | 0.43 | 10.86 | 4.02 | 3.99 | 3.50 | 87.06 | 0.49 | 12.19 | 4.54 | 4.53 | 3.81 | 83.92 | 0.72 | 15.86 |
| 20 | 5.02 | 5.01 | 4.36 | 86.85 | 0.65 | 12.95 | 5.11 | 5.09 | 4.30 | 84.15 | 0.79 | 15.46 | 5.57 | 5.56 | 4.45 | 79.89 | 1.11 | 19.93 |

Table V
Likelihood Ratio Tests

This table reports the likelihood ratio test statistics under the restriction that the effect of liquidity risk is equal to zero (i.e., $\beta_L = 0$) in the nonlinear municipal yield model in (14). The test statistics follow an F distribution with $(1, n-3)$ degrees of freedom. The critical F value is 4.0 at the five percent level.

| Maturity | AAA Bonds | AA/A Bonds | BBB Bonds |
|----------|-------------|-------------|-------------|
| | $F(1, n-3)$ | $F(1, n-3)$ | $F(1, n-3)$ |
| 1 | 4.18 | 16.00 | 27.37 |
| 2 | 15.33 | 13.42 | 7.45 |
| 3 | 11.50 | 12.55 | 4.74 |
| 5 | 7.67 | 6.57 | 4.26 |
| 7 | 4.60 | 4.38 | 4.54 |
| 10 | 5.31 | 5.34 | 7.45 |
| 20 | 5.31 | 4.26 | 13.89 |

Table VI
Characteristics of Municipal Bonds

This table reports the average coupon rate, issue size, volume and trade frequency of the municipal bond portfolios formed by rating and maturity. We rank all bonds based on each characteristic and divide them into low, medium and high groups. Reported here are the characteristics of low and high groups.

| Maturity | AAA | | AA/A | | BBB | |
|-------------------------------|-------|--------|-------|--------|-------|---------|
| | Low | High | Low | High | Low | High |
| Coupon | | | | | | |
| 1 | 2.15 | 3.88 | 2.36 | 4.38 | 2.40 | 4.23 |
| 2 | 2.32 | 4.47 | 2.49 | 4.50 | 2.56 | 4.66 |
| 3 | 2.48 | 4.61 | 2.59 | 4.68 | 2.85 | 4.79 |
| 5 | 2.99 | 4.87 | 3.01 | 4.86 | 3.39 | 5.08 |
| 7 | 3.39 | 4.95 | 3.46 | 4.98 | 3.85 | 5.24 |
| 10 | 3.67 | 5.18 | 3.76 | 5.15 | 4.20 | 5.41 |
| 20 | 3.99 | 5.65 | 4.11 | 5.61 | 4.89 | 6.17 |
| Issue Size (million) | | | | | | |
| 1 | 8.44 | 288.04 | 4.58 | 296.93 | 15.05 | 368.31 |
| 2 | 9.60 | 204.24 | 4.87 | 328.76 | 4.27 | 475.03 |
| 3 | 10.35 | 211.55 | 5.41 | 336.48 | 4.92 | 590.30 |
| 5 | 11.77 | 222.35 | 6.45 | 339.89 | 6.70 | 1093.34 |
| 7 | 11.64 | 208.81 | 6.99 | 322.24 | 8.74 | 1131.06 |
| 10 | 12.22 | 222.05 | 8.30 | 333.00 | 13.00 | 1066.91 |
| 20 | 10.67 | 122.23 | 20.67 | 416.63 | 51.83 | 946.17 |
| Total Volume (million) | | | | | | |
| 1 | 0.22 | 85.90 | 0.07 | 19.09 | 0.08 | 2.17 |
| 2 | 0.07 | 14.61 | 0.05 | 3.99 | 0.08 | 2.84 |
| 3 | 0.06 | 7.34 | 0.05 | 3.57 | 0.05 | 2.93 |
| 5 | 0.05 | 3.33 | 0.04 | 3.70 | 0.05 | 4.16 |
| 7 | 0.04 | 3.28 | 0.04 | 2.99 | 0.05 | 3.90 |
| 10 | 0.04 | 3.69 | 0.04 | 3.78 | 0.05 | 6.34 |
| 20 | 0.04 | 5.42 | 0.04 | 3.75 | 0.11 | 10.07 |
| Frequency of Trades | | | | | | |
| 1 | 2 | 13 | 1 | 12 | 2 | 5 |
| 2 | 1 | 8 | 1 | 7 | 2 | 9 |
| 3 | 1 | 8 | 1 | 9 | 1 | 14 |
| 5 | 1 | 9 | 1 | 11 | 1 | 22 |
| 7 | 1 | 10 | 1 | 11 | 1 | 22 |
| 10 | 1 | 11 | 1 | 13 | 2 | 27 |
| 20 | 1 | 7 | 1 | 11 | 2 | 33 |

Table VII
Municipal Yields of Portfolios Ranked by Bond Characteristics

This table reports average annualized yields of the low and high portfolios ranked by coupon rates, issue size, volume and frequency of trades.

| Maturity | AAA | | AA/A | | BBB | |
|-------------------------------|------|------|------|------|------|------|
| | Low | High | Low | High | Low | High |
| Coupon | | | | | | |
| 1 | 2.03 | 2.06 | 2.24 | 2.22 | 2.66 | 2.77 |
| 2 | 2.36 | 2.38 | 2.46 | 2.48 | 2.78 | 2.98 |
| 3 | 2.66 | 2.68 | 2.70 | 2.77 | 3.07 | 3.24 |
| 5 | 3.17 | 3.21 | 3.18 | 3.31 | 3.56 | 3.86 |
| 7 | 3.60 | 3.66 | 3.60 | 3.75 | 4.02 | 4.47 |
| 10 | 3.92 | 3.97 | 3.93 | 4.07 | 4.32 | 4.63 |
| 20 | 5.26 | 4.83 | 5.38 | 5.01 | 5.54 | 5.77 |
| Issue Size (million) | | | | | | |
| 1 | 2.06 | 2.01 | 2.30 | 2.20 | 2.88 | 2.80 |
| 2 | 2.39 | 2.36 | 2.49 | 2.47 | 2.96 | 2.76 |
| 3 | 2.69 | 2.64 | 2.78 | 2.76 | 3.30 | 3.15 |
| 5 | 3.21 | 3.18 | 3.32 | 3.28 | 3.84 | 3.54 |
| 7 | 3.65 | 3.63 | 3.76 | 3.72 | 4.28 | 4.13 |
| 10 | 3.96 | 3.94 | 4.05 | 4.04 | 4.59 | 4.38 |
| 20 | 5.17 | 4.88 | 5.17 | 5.06 | 5.68 | 5.44 |
| Total Volume (million) | | | | | | |
| 1 | 2.12 | 1.98 | 2.36 | 2.12 | 2.91 | 2.68 |
| 2 | 2.42 | 2.33 | 2.53 | 2.42 | 3.18 | 2.95 |
| 3 | 2.71 | 2.64 | 2.80 | 2.71 | 3.27 | 3.14 |
| 5 | 3.24 | 3.16 | 3.31 | 3.23 | 3.86 | 3.65 |
| 7 | 3.68 | 3.61 | 3.73 | 3.68 | 4.32 | 4.18 |
| 10 | 3.98 | 3.93 | 4.04 | 4.00 | 4.58 | 4.45 |
| 20 | 5.15 | 4.86 | 5.25 | 4.93 | 5.59 | 5.40 |
| Frequency of Trades | | | | | | |
| 1 | 2.08 | 2.00 | 2.29 | 2.18 | 2.88 | 2.79 |
| 2 | 2.39 | 2.35 | 2.49 | 2.44 | 3.07 | 2.92 |
| 3 | 2.69 | 2.64 | 2.76 | 2.73 | 3.25 | 3.14 |
| 5 | 3.23 | 3.18 | 3.29 | 3.24 | 3.83 | 3.68 |
| 7 | 3.67 | 3.62 | 3.71 | 3.69 | 4.31 | 4.22 |
| 10 | 3.97 | 3.93 | 4.02 | 4.01 | 4.52 | 4.49 |
| 20 | 5.07 | 4.91 | 5.18 | 5.03 | 5.61 | 5.52 |

Table VIII
Liquidity Risk Parameter Estimates for Portfolios Ranked by Characteristics

This table reports the estimates of the liquidity risk parameter (β_L) for portfolios ranked by coupon, issue size, volume, and frequency of trades, respectively, for each rating and maturity class. All parameter estimates are significant at least at the five percent level.

| Coupon | | | | | | |
|----------------------------|---------|---------|---------|---------|---------|---------|
| Maturity | AAA | | AA/A | | BBB | |
| | Low | High | Low | High | Low | High |
| 1 | -0.0791 | -0.0764 | -0.0999 | -0.1020 | -0.1409 | -0.1065 |
| 2 | -0.0879 | -0.0867 | -0.1104 | -0.1024 | -0.1600 | -0.1295 |
| 3 | -0.0942 | -0.0967 | -0.1164 | -0.1121 | -0.1625 | -0.1384 |
| 5 | -0.1484 | -0.1565 | -0.2122 | -0.1799 | -0.2386 | -0.2222 |
| 7 | -0.1652 | -0.1886 | -0.2443 | -0.2127 | -0.3621 | -0.3075 |
| 10 | -0.2583 | -0.2374 | -0.2865 | -0.2654 | -0.3707 | -0.3846 |
| 20 | -0.2599 | -0.2697 | -0.3390 | -0.3048 | -0.4216 | -0.3972 |
| Issue Size | | | | | | |
| 1 | -0.0643 | -0.0505 | -0.0848 | -0.0696 | -0.1490 | -0.0963 |
| 2 | -0.0806 | -0.0568 | -0.1339 | -0.0740 | -0.1557 | -0.0961 |
| 3 | -0.0958 | -0.0625 | -0.1366 | -0.0851 | -0.2536 | -0.1272 |
| 5 | -0.1329 | -0.1196 | -0.2065 | -0.1190 | -0.3024 | -0.1788 |
| 7 | -0.1642 | -0.1309 | -0.1854 | -0.1483 | -0.3126 | -0.2473 |
| 10 | -0.2226 | -0.1715 | -0.2697 | -0.1830 | -0.3649 | -0.2937 |
| 20 | -0.3529 | -0.2451 | -0.4697 | -0.2822 | -0.6775 | -0.4585 |
| Trading Volume | | | | | | |
| 1 | -0.0683 | -0.0535 | -0.0794 | -0.0619 | -0.1388 | -0.0811 |
| 2 | -0.0805 | -0.0688 | -0.1243 | -0.0755 | -0.1490 | -0.1103 |
| 3 | -0.0964 | -0.0759 | -0.1323 | -0.0879 | -0.1671 | -0.1279 |
| 5 | -0.1404 | -0.0977 | -0.1580 | -0.1199 | -0.2556 | -0.1819 |
| 7 | -0.1659 | -0.1172 | -0.2041 | -0.1345 | -0.3432 | -0.2532 |
| 10 | -0.2317 | -0.1640 | -0.2588 | -0.1827 | -0.4137 | -0.2677 |
| 20 | -0.3067 | -0.2425 | -0.5053 | -0.3192 | -0.6507 | -0.4506 |
| Frequency of Trades | | | | | | |
| 1 | -0.0627 | -0.0821 | -0.0952 | -0.0509 | -0.1505 | -0.1151 |
| 2 | -0.0679 | -0.0677 | -0.1209 | -0.0814 | -0.1611 | -0.1423 |
| 3 | -0.0850 | -0.0873 | -0.1058 | -0.0862 | -0.1402 | -0.1632 |
| 5 | -0.1493 | -0.1356 | -0.1474 | -0.1245 | -0.2561 | -0.2712 |
| 7 | -0.1904 | -0.1492 | -0.2373 | -0.2044 | -0.3272 | -0.3484 |
| 10 | -0.2580 | -0.2228 | -0.2917 | -0.1978 | -0.3857 | -0.3426 |
| 20 | -0.2643 | -0.1976 | -0.4408 | -0.2102 | -0.4475 | -0.3588 |

Table IX
Estimates of Liquidity Spreads for Different Characteristic Portfolios

This table reports the estimates of liquidity risk premium in magnitude (%) and proportion of the observed spread (% yield) for each high and low portfolio ranked by coupon rates, issue size, volume, and frequency of trades, respectively, for each rating and maturity class.

| Coupon | | | | | | | | | | | | |
|----------------------------|------|---------|------|---------|------|---------|------|---------|------|---------|------|---------|
| Maturity | AAA | | | | AA/A | | | | BBB | | | |
| | Low | | High | | Low | | High | | Low | | High | |
| | % | % Yield | % | % Yield | % | % Yield | % | % Yield | % | % Yield | % | % Yield |
| 1 | 0.18 | 8.87 | 0.17 | 8.25 | 0.23 | 10.27 | 0.23 | 10.36 | 0.32 | 12.03 | 0.24 | 8.66 |
| 2 | 0.20 | 8.47 | 0.20 | 8.40 | 0.25 | 10.16 | 0.23 | 9.27 | 0.36 | 12.95 | 0.29 | 9.73 |
| 3 | 0.21 | 7.89 | 0.22 | 8.21 | 0.26 | 9.63 | 0.25 | 9.03 | 0.37 | 12.05 | 0.31 | 9.57 |
| 5 | 0.34 | 10.73 | 0.35 | 10.90 | 0.48 | 15.09 | 0.41 | 12.39 | 0.54 | 15.17 | 0.50 | 12.95 |
| 7 | 0.37 | 10.28 | 0.43 | 11.75 | 0.55 | 15.28 | 0.48 | 12.80 | 0.82 | 20.40 | 0.69 | 15.44 |
| 10 | 0.58 | 14.80 | 0.54 | 13.60 | 0.65 | 16.54 | 0.60 | 14.74 | 0.84 | 19.44 | 0.87 | 18.79 |
| 20 | 0.59 | 11.22 | 0.61 | 12.63 | 0.77 | 14.31 | 0.69 | 13.77 | 0.95 | 17.15 | 0.90 | 15.60 |
| Mean | 0.35 | 10.32 | 0.36 | 10.54 | 0.46 | 13.04 | 0.41 | 11.77 | 0.60 | 15.60 | 0.54 | 12.96 |
| Issue Size | | | | | | | | | | | | |
| 1 | 0.15 | 7.28 | 0.11 | 5.47 | 0.19 | 8.26 | 0.16 | 7.27 | 0.34 | 11.81 | 0.22 | 7.86 |
| 2 | 0.18 | 7.53 | 0.13 | 5.51 | 0.30 | 12.05 | 0.17 | 6.88 | 0.35 | 11.82 | 0.22 | 7.97 |
| 3 | 0.22 | 8.18 | 0.14 | 5.30 | 0.31 | 11.15 | 0.19 | 6.88 | 0.57 | 17.27 | 0.29 | 9.21 |
| 5 | 0.30 | 9.35 | 0.27 | 8.49 | 0.47 | 14.16 | 0.27 | 8.23 | 0.68 | 17.71 | 0.40 | 11.30 |
| 7 | 0.37 | 10.14 | 0.30 | 8.26 | 0.42 | 11.17 | 0.34 | 9.14 | 0.71 | 16.59 | 0.56 | 13.56 |
| 10 | 0.50 | 12.63 | 0.39 | 9.90 | 0.61 | 15.06 | 0.41 | 10.15 | 0.82 | 17.86 | 0.66 | 15.07 |
| 20 | 0.80 | 15.47 | 0.55 | 11.27 | 1.06 | 20.50 | 0.64 | 12.65 | 1.53 | 26.94 | 1.04 | 19.12 |
| Mean | 0.36 | 10.08 | 0.27 | 7.74 | 0.48 | 13.19 | 0.31 | 8.74 | 0.71 | 17.14 | 0.48 | 12.01 |
| Trading Volume | | | | | | | | | | | | |
| 1 | 0.15 | 7.08 | 0.12 | 6.06 | 0.18 | 7.63 | 0.14 | 6.60 | 0.31 | 10.65 | 0.18 | 6.72 |
| 2 | 0.18 | 7.44 | 0.16 | 6.87 | 0.28 | 11.07 | 0.17 | 7.02 | 0.34 | 10.69 | 0.25 | 8.47 |
| 3 | 0.22 | 8.12 | 0.17 | 6.44 | 0.30 | 10.71 | 0.20 | 7.38 | 0.38 | 11.62 | 0.29 | 9.24 |
| 5 | 0.32 | 9.88 | 0.22 | 6.96 | 0.36 | 10.88 | 0.27 | 8.36 | 0.58 | 15.03 | 0.41 | 11.23 |
| 7 | 0.37 | 10.05 | 0.26 | 7.20 | 0.46 | 12.33 | 0.30 | 8.15 | 0.78 | 18.06 | 0.57 | 13.64 |
| 10 | 0.52 | 13.07 | 0.37 | 9.41 | 0.58 | 14.36 | 0.41 | 10.25 | 0.93 | 20.31 | 0.61 | 13.71 |
| 20 | 0.69 | 13.40 | 0.55 | 11.32 | 1.14 | 21.71 | 0.72 | 14.60 | 1.47 | 26.30 | 1.02 | 18.89 |
| Mean | 0.35 | 9.86 | 0.26 | 7.75 | 0.47 | 12.67 | 0.32 | 8.91 | 0.68 | 16.09 | 0.48 | 11.70 |
| Frequency of Trades | | | | | | | | | | | | |
| 1 | 0.14 | 6.73 | 0.19 | 9.50 | 0.22 | 9.61 | 0.12 | 5.50 | 0.34 | 11.81 | 0.26 | 9.32 |
| 2 | 0.15 | 6.28 | 0.15 | 6.38 | 0.27 | 10.84 | 0.18 | 7.38 | 0.36 | 11.73 | 0.32 | 10.96 |
| 3 | 0.19 | 7.06 | 0.20 | 7.58 | 0.24 | 8.70 | 0.19 | 6.96 | 0.32 | 9.85 | 0.37 | 11.78 |
| 5 | 0.34 | 10.53 | 0.31 | 9.75 | 0.33 | 10.03 | 0.28 | 8.64 | 0.58 | 15.14 | 0.61 | 16.58 |
| 7 | 0.43 | 11.72 | 0.34 | 9.39 | 0.54 | 14.56 | 0.46 | 12.47 | 0.74 | 17.17 | 0.79 | 18.72 |
| 10 | 0.58 | 14.61 | 0.50 | 12.72 | 0.66 | 16.42 | 0.45 | 11.22 | 0.87 | 19.25 | 0.77 | 17.15 |
| 20 | 0.60 | 11.83 | 0.45 | 9.16 | 1.00 | 19.31 | 0.48 | 9.54 | 1.01 | 18.00 | 0.81 | 14.67 |
| Mean | 0.35 | 9.82 | 0.31 | 9.21 | 0.47 | 12.78 | 0.31 | 8.82 | 0.60 | 14.71 | 0.56 | 14.17 |

Figure 1. Yields for Different Municipal Rating/Maturity Portfolios and Treasuries

Monthly yield series are plotted from July 2000 to June 2004 for different rating portfolios and Treasuries with maturities of 1, 2, 3, 5, 7 and 10 years.

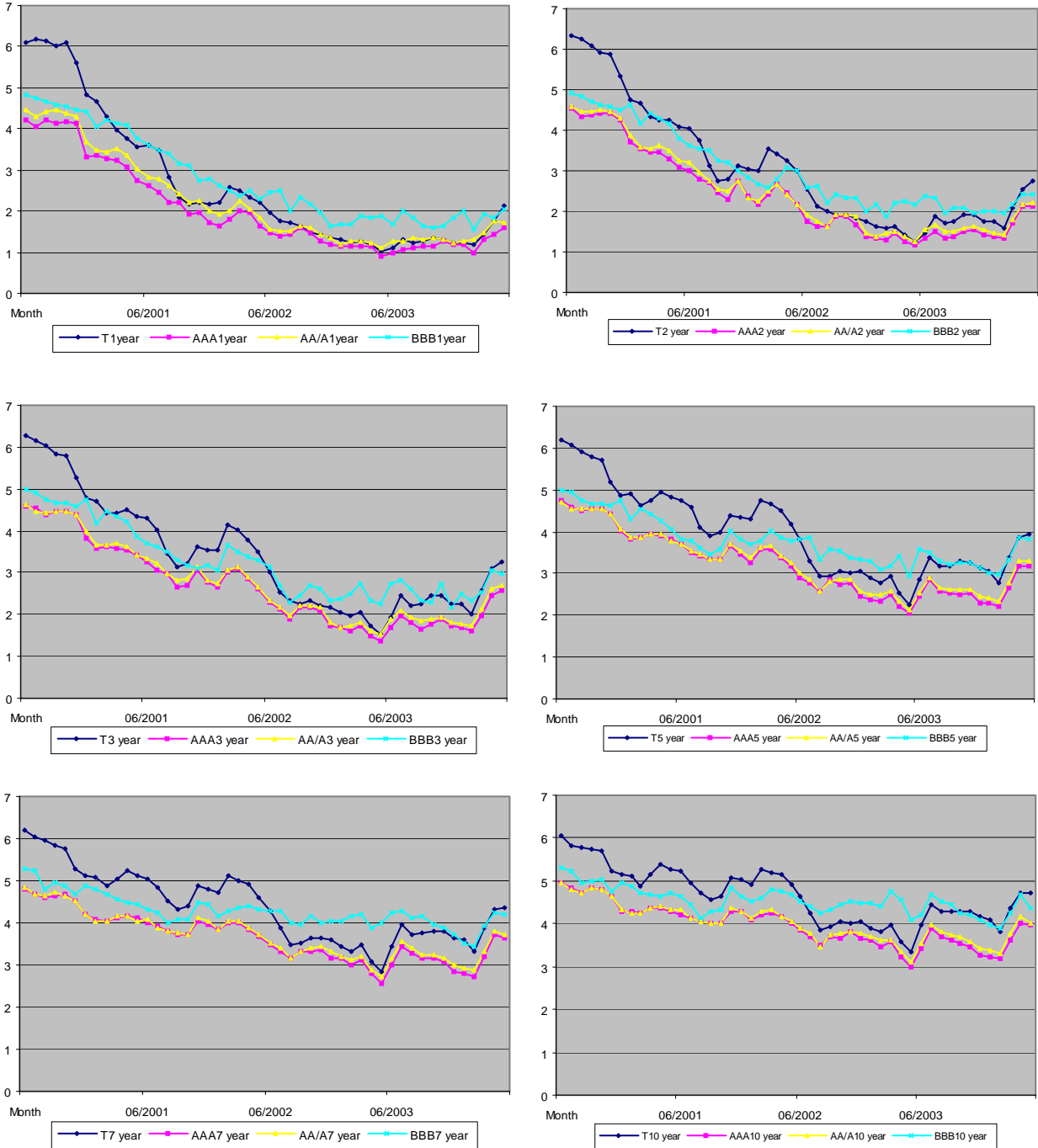
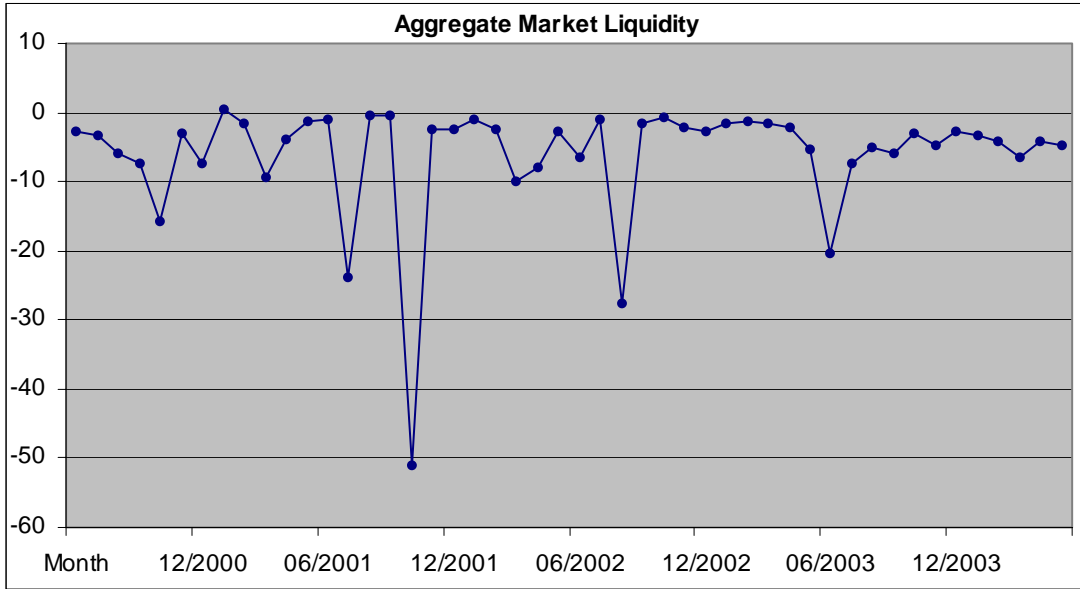


Figure 2. Aggregate Municipal Market Liquidity and Innovations of Liquidity

Panel A shows the time series of aggregate municipal market liquidity while Panel B shows the innovations of municipal market liquidity. Liquidity and its innovations are expressed in percentage terms on the vertical axis. We use the innovation series to estimate systematic liquidity risk.

Panel A: Aggregate Municipal Bond Market Liquidity



Panel B: Innovations in Liquidity

